

ROOT CUTTER KITS



**Complete Kits
Include Tool Box,
Choice Of Blades,
Choice Of Skids,
Motor With Tail
Nozzle, & Wrenches**

Mainline Root Cutter



MAINLINE KITS

- 950-0000C - Complete Kit with Concave Blades - Regular Skids
- 950-0000CW - Complete Kit with Concave Blades - Wheel Skids
- 950-0000F - Complete Kit with Flat Blades - Regular Skids
- 950-0000FB - Complete Kit with Flex Blades - Regular Skids
- 950-0000W - Complete Kit with Spiral Blades - Wheel Skids
- 950-0000S - Complete Kit with Spiral Blades - Regular Skids
- 950-0000CAK - Complete Kit with CAK tool Assembly - Regular Skids
- 950-0000NB - Complete Kit with No Blades - Regular Skids
- 950-1000C - Complete Kit with Concave Blades & Donut Skids
- 950-1000F - Complete Kit with Flat Blades & Donut Skids
- 950-1000S - Complete Kit with Spiral Blades & Donut Skids
- 950-1000FB - Complete Kit with Flex Blades & Donut Skids

LATERAL KITS

- 950-2000F - Complete Kit with Flat Blades - Regular Skids
- 950-2000C - Complete Kit with Concave Blades - Regular Skids
- 950-2000S - Complete Kit with Spiral Blades - Regular Skids
- 950-2000NB - Complete Kit with No Blades - Regular Skids



Lateral Root Cutter

UEMSI[®]

PIPELINE CLEANING & TELEVISION EQUIPMENT

Corporate Office: 1.800.666.0766
Website: WWW.UEMSI.COM Email: info@uemi.com

...And Accessories

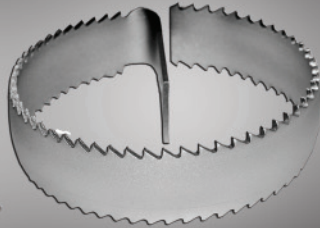
- Can Also Order Individually!

Blades - Mainline Available In 6"-18" & Lateral Available In 4"-10"



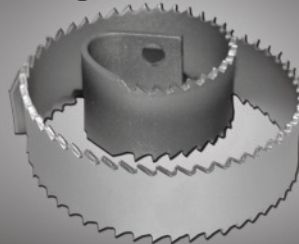
Flex Blade

Part # 7700*



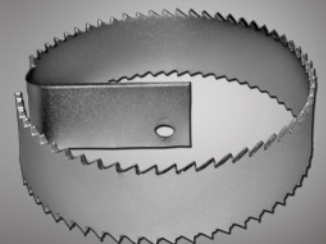
Concave Blade

Part # 7600C-*



Spiral Blade

Part # 7600*



Flat Blade

Part # 7600F-*

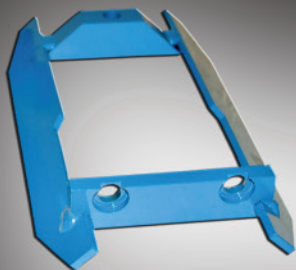
** Indicate Blade Size*

Skids - Mainline: Regular And Wheeled Available In 6"-15"

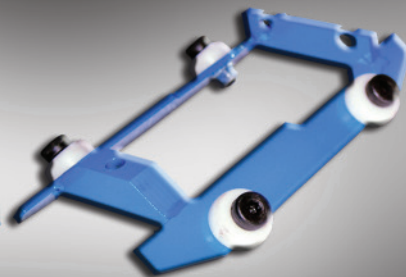
- Front/Rear Donut Skids Also Available

Lateral: Regular Available In 4"-12"

** Call For Part Numbers*



Regular Skid



Wheeled Skid



Donut Front Skid



Donut Rear Skid

CAK Tool™ - Only Available In Mainline
Blades Available In 5" & 7"
Cables Available In 6" - 30"



Part # 950-5000

CAK Tool Kit

□ Specifications are subject to change.

UEMSI®

PIPELINE CLEANING & TELEVISION EQUIPMENT

Corporate Office: 1.800.666.0766

Website: WWW.UEMSI.COM Email: info@uemsi.com