

PIPELINE CLEANING & TELEVISIONING EQUIPMENT

NOZZLE BOOKLET

Corporate Office: 1.800.666.0766

Website: WWW.UEMSI.COM

Email: info@uemsi.com

TABLE OF CONTENTS

<p>Aluminum Grease Nozzle</p> <p style="padding-left: 20px;">3/4" 6</p> <p style="padding-left: 20px;">1" 8</p> <p>Aluminum Sand Nozzle</p> <p style="padding-left: 20px;">3/4" 6</p> <p style="padding-left: 20px;">1" 10</p> <p>Aluminum Storm Sewer Nozzle</p> <p style="padding-left: 20px;">1" 12</p> <p>Big Pete Nozzle</p> <p style="padding-left: 20px;">1" 11</p> <p>Blue Streak (Small) Nozzle</p> <p style="padding-left: 20px;">1" 17</p> <p>Bulldozer Nozzle</p> <p style="padding-left: 20px;">1" 17</p> <p style="padding-left: 20px;">1 1/4" 17</p> <p>Button Style Short Nozzle</p> <p style="padding-left: 20px;">1/2" 4</p> <p>Ellipse Nozzle</p> <p style="padding-left: 20px;">1/2" 3</p> <p style="padding-left: 20px;">1" 13</p> <p>General Purpose Nozzle</p> <p style="padding-left: 20px;">1" 16</p> <p>Hustler Chisel Nozzle</p> <p style="padding-left: 20px;">3/4" 12</p> <p style="padding-left: 20px;">1" 12</p> <p>Hustler Cleaning Nozzle</p> <p style="padding-left: 20px;">3/4" 10</p> <p style="padding-left: 20px;">1" 10</p> <p>Hustler Grenade Nozzle</p> <p style="padding-left: 20px;">1" 11</p> <p>Intruder Nozzle</p> <p style="padding-left: 20px;">3/4" 14</p> <p>Jet Paks</p> <p style="padding-left: 20px;">..... 18-</p> <p style="padding-left: 20px;">..... 21</p> <p>Mini-Penetrator Nozzle</p> <p style="padding-left: 20px;">1/8" 1</p> <p>Mini-Storm/Sand Nozzle</p> <p style="padding-left: 20px;">1" 13</p> <p>Mustang Hex Nozzle</p> <p style="padding-left: 20px;">1/4" 1</p> <p>Penetrator Nozzle</p> <p style="padding-left: 20px;">1/4" 1</p> <p style="padding-left: 20px;">3/8" 2</p> <p style="padding-left: 20px;">1/2" 3</p> <p style="padding-left: 20px;">3/4" 5</p> <p style="padding-left: 20px;">1" 13</p>	<p>Penetrator Lance Tip Nozzle</p> <p style="padding-left: 20px;">1/2" 4</p> <p style="padding-left: 20px;">3/4" 6</p> <p style="padding-left: 20px;">1" 9</p> <p>Pete Nozzle</p> <p style="padding-left: 20px;">1" 15</p> <p>Radial Bullet Nozzle</p> <p style="padding-left: 20px;">1/4" 2</p> <p style="padding-left: 20px;">3/8" 3</p> <p style="padding-left: 20px;">3/4" 5</p> <p style="padding-left: 20px;">1" 14</p> <p style="padding-left: 20px;">1 1/4" 14</p> <p>Radial Vortex Nozzle</p> <p style="padding-left: 20px;">3/4" 6</p> <p style="padding-left: 20px;">1" 6</p> <p>Sanitary Nozzle</p> <p style="padding-left: 20px;">1" 15</p> <p>Steel Sand Nozzle</p> <p style="padding-left: 20px;">1" 15</p> <p>Tandem Bomb Nozzle</p> <p style="padding-left: 20px;">1" 16</p> <p>Tungsten Carbide Penetrator Nozzle</p> <p style="padding-left: 20px;">3/4" 9</p> <p style="padding-left: 20px;">1" 9</p> <p>Tungsten Carbide Sand Nozzle</p> <p style="padding-left: 20px;">3/4" 8</p> <p style="padding-left: 20px;">1" 8</p> <p>Tungsten Carbide Sanitary Nozzle</p> <p style="padding-left: 20px;">3/4" 7</p> <p style="padding-left: 20px;">1" 7</p> <p>Typhoon Nozzle</p> <p style="padding-left: 20px;">3/8" 2</p> <p style="padding-left: 20px;">1/2" 4</p> <p style="padding-left: 20px;">3/4" 7</p> <p style="padding-left: 20px;">1" 16</p>
---	---

Mini-Penetrator Nozzle



Best suited for general cleaning, breaking up clogs and semi-plugged lines.

UEMSI Part #	Size NPT	Description	Jet Degrees	GPM	PSI
G2-33	1/8"	Penetrator 1 Front/ 3 Rear	30°	3 to 4	Up to 4000
G2-34	1/8"	Penetrator 1 Front/4 Rear	30°	5 to 6	Up to 4000
G2-35	1/8"	Penetrator 1 Front/5 Rear	30°	7 to 10	Up to 4000
G2-36	1/8"	Penetrator 1 Front/6 Rear	30°	7 to 10	Up to 4000
G2-303	1/8"	Penetrator 3 Rear Only	30°	3 to 4	Up to 4000
G2-304	1/8"	Penetrator 4 Rear Only	30°	5 to 6	Up to 4000
G2-305	1/8"	Penetrator 5 Rear Only	30°	7 to 10	Up to 4000
G2-306	1/8"	Penetrator 6 Rear Only	30°	7 to 10	Up to 4000

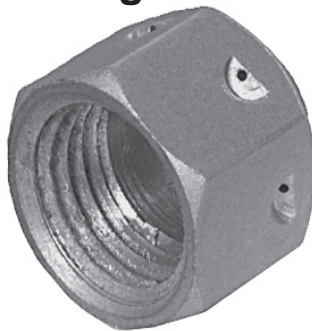
Penetrator Nozzle



Best suited for general cleaning, breaking up clogs and semi-plugged lines.

UEMSI Part #	Size NPT	Description	Jet Degrees	GPM	PSI
G0-13	1/4"	Penetrator 1 Front 3 Rear	15°	3 to 4	Up to 4000
G0-14	1/4"	Penetrator 1 Front 4 Rear	15°	5 to 6	Up to 4000
G0-16	1/4"	Penetrator 1 Front/6 Rear	15°	7 to 10	Up to 4000

Mustang Hex Nozzle



Best suited to general cleaning of most debris from lines.

UEMSI Part #	Size NPT	Description	Jet Degrees	GPM	PSI
G9-43	1/4"	Mustang Hex 1 Front/3 Rear	40°	3 to 4	Up to 4000
G9-46	1/4"	Mustang Hex 1 Front/6 Rear	40°	7 to 10	Up to 4000

Radial Bullet Nozzle



Best suited to general cleaning of most debris from lines.

UEMSI Part #	Size NPT	Description	Jet Degrees	GPM	PSI
G7-33	1/4"	Radial Bullet w/ Front Jet	30°	3 to 4	Up to 4000
G7-34	1/4"	Radial Bullet w/ Front Jet	30°	5 to 6	Up to 4000
G7-35	1/4"	Radial Bullet w/ Front Jet	30°	7 to 10	Up to 4000
G7-36	1/4"	Radial Bullet w/ Front Jet	30°	7 to 10	Up to 4000
G7-45	1/4"	Radial Bullet w/ Front Jet	40°	7 to 10	Up to 4000
G7-46	1/4"	Radial Bullet w/ Front Jet	40°	7 to 10	Up to 4000
G7-303	1/4"	Radial Bullet w/o Front Jet	30°	3 to 4	Up to 4000
G7-304	1/4"	Radial Bullet w/o Front Jet	30°	5 to 6	Up to 4000
G7-306	1/4"	Radial Bullet w/o Front Jet	30°	7 to 10	Up to 4000

Penetrator Nozzle



Best suited for general cleaning, breaking up clogs and semi-plugged lines.

UEMSI Part #	Size NPT	Description	Jet Degrees	GPM	PSI
G5-13	3/8"	Penetrator 1 Front/3 Rear	15°	3 to 4	Up to 4000
G5-14	3/8"	Penetrator 1 Front/4 Rear	15°	5 to 6	Up to 4000
G5-15	3/8"	Penetrator 1 Front/5 Rear	15°	7 to 10	Up to 4000
G5-16	3/8"	Penetrator 1 Front/6 Rear	15°	7 to 10	Up to 4000

Typhoon Nozzle



Best suited for general cleaning, de-scaling and cutting grease from lines.

UEMSI Part #	Size NPT	Description	Jet Degrees	GPM	PSI
RT-3	3/8"	Typhoon 3 Front Rotating/6 Rear		7 to 10	Up to 4000

* Replacement Jet Stainless Steel All RT-4J

Radial Bullet Nozzle



Best suited to general cleaning of most debris from lines.

UEMSI Part #	Size NPT	Description	Jet Degrees	GPM	PSI
G8-33	3/8"	Radial Bullet w/o Front Jet	30°	3 to 4	Up to 4000
G8-34	3/8"	Radial Bullet w/o Front Jet	30°	5 to 6	Up to 4000
G8-35	3/8"	Radial Bullet w/o Front Jet	30°	7 to 10	Up to 4000
G8-36	3/8"	Radial Bullet w/o Front Jet	30°	7 to 10	Up to 4000
G8-46	3/8"	Radial Bullet w/o Front Jet	40°	7 to 10	Up to 4000
G8-303	3/8"	Radial Bullet w/o Front Jet	30°	3 to 4	Up to 4000
G8-304	3/8"	Radial Bullet w/o Front Jet	30°	5 to 6	Up to 4000
G8-306	3/8"	Radial Bullet w/o Front Jet	30°	7 to 10	Up to 4000
G8-406	3/8"	Radial Bullet w/o Front Jet	40°	7 to 10	Up to 4000

Ellipse Nozzle



Best suited for blockages, offset joints and tight bends to remove most debris from lines.

UEMSI Part #	Size NPT	Description	Jet Degrees	GPM	PSI
AT136160	1/2"	Ellipse 1 Front/6 Rear	15°	25	2000

* Replacement Jet Stainless Steel All AT136160-25

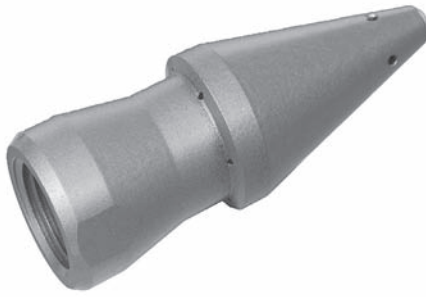
Penetrator Nozzle



Best suited for general cleaning, breaking up clogs and semi-plugged lines.

UEMSI Part #	Size NPT	Description	Jet Degrees	GPM	PSI
F1-115	1/2"	Penetrator 1 Front/6 Rear	25°	8 to 15	Up to 4000
F1-125	1/2"	Penetrator 1 Front/6 Rear	25°	15 to 25	Up to 4000

Penetrator Lance Tip Nozzle



Best suited for general cleaning, breaking up clogs and semi-plugged lines.

UEMSI Part #	Size NPT	Description	Jet Degrees	GPM	PSI
F1-1115	1/2"	Lance Tip Penetrator 1F/4S/6R	25°	8 to 15	Up to 4000
F1-1125	1/2"	Lance Tip Penetrator 1F/4S/6R	25°	15 to 25	Up to 4000

Button Style Short Nozzle



Best suited for general cleaning of most debris from lines.

UEMSI Part #	Size NPT	Description	Jet Degrees	GPM	PSI
F5-315	1/2"	Button Short w/ Front Jet	30°	8 to 15	Up to 4000
F5-315N	1/2"	Button Short w/o Front Jet	30°	8 to 15	Up to 4000
F5-325	1/2"	Button Short w/ Front Jet	30°	15 to 25	Up to 4000
F5-325N	1/2"	Button Short w/o Front Jet	30°	15 to 25	Up to 4000
F5-380	1/2"	Button Short w/ Front Jet	30°	15 to 25	Up to 4000

Typhoon Nozzle



Best suited for general cleaning, de-scaling and cutting grease from lines.

UEMSI Part #	Size NPT	Description	Jet Degrees	GPM	PSI
RT-4	1/2"	Typhoon 3 Front Rotating/6 Rear		18 to 35	Up to 4000

Radial Bullet Nozzle



Best suited to general cleaning of most debris from lines.

UEMSI Part #	Size NPT	Description	Jet Degrees	GPM	PSI
E0-335	3/4"	Radial Bullet 1Front/6Rear	18°	35 to 40	Up to 1800
E0-335V	3/4"	Radial Bullet 1Front/6Rear Vac	18°	35 to 40	Up to 3000
E0-3A35	3/4"	Radial Bullet 1Front/6Rear	35°	35 to 40	Up to 1800
E0-3A35V	3/4"	Radial Bullet 1Front/6Rear Vac	35°	35 to 40	Up to 3000
E0-3N35	3/4"	Radial Bullet 6Rear	18°	35 to 40	Up to 1800
E0-3N35V	3/4"	Radial Bullet 6Rear Vac	35°	35 to 40	Up to 3000
E0-3NA35	3/4"	Radial Bullet w/o Front/6 Rear	35°	35 to 40	Up to 1800
E0-3NA35V	3/4"	Radial Bullet 6Rear Vac	35°	35 to 40	Up to 3000

Radial Vortex Nozzle



Best suited for heavy general cleaning of most debris and grease-filled lines.

UEMSI Part #	Size NPT	Description	Jet Degrees	GPM	PSI
E0-435	3/4"	Radial Vortex 1Front/6Rear	18°/24°	35 to 40	Up to 1800
E0-435V	3/4"	Radial Vortex 1Front/6Rear Vac	18°/24°	35 to 40	Up to 3000
A5-145	1"	Radial Vortex 1Front/6Rear	18°/24°	45	2000
A5-150-3000	1"	Radial Vortex 1Front/6Rear	18°/24°	50	3000
A5-160	1"	Radial Vortex 1Front/6Rear	18°/24°	60	2000
A5-180	1"	Radial Vortex 1Front/6Rear	18°/24°	80	2000

Penetrator Nozzle



Best suited for general cleaning, breaking up clogs and semi-plugged lines.

UEMSI Part #	Size NPT	Description	Jet Degrees	GPM	PSI
E2-335	3/4"	Penetrator 1Front/6Rear	12°	35 to 40	Up to 1800

Penetrator Lance Tip Nozzle



Best suited for general cleaning, breaking up clogs and semi-plugged lines.

UEMSI Part #	Size NPT	Description	Jet Degrees	GPM	PSI
E2-1335	3/4"	Lance Tip Penetrator 1F/4S/6R	12°	35 to 40	Up to 1800

Aluminum Sand Nozzle



Best suited for removal of sand, gravel and dirt from lines 8" to 24" Diameter.

UEMSI Part #	Size NPT	Description	Jet Degrees	GPM	PSI
E5-235	3/4"	Aluminum Sand 1Front/8Rear	24°	35 to 40	Up to 2000

* Replacement Jet Stainless Steel Front BFJE5 Rear B-J445.E5

Aluminum Grease Nozzle



Best suited for removal of heavy grease-filled lines from 6" to 24" Diameter.

UEMSI Part #	Size NPT	Description	Jet Degrees	GPM	PSI
E9-135	3/4"	Aluminum Grease 1Front/6Rear	17°	35 to 40	Up to 2000
E9-135V	3/4"	Aluminum Grease 1Front/6Rear Vac	17°	35 to 40	Up to 3000

* Replacement Jet Stainless Steel Front BFJE89 Rear B-J445.E89

* Replacement Jet Stainless Steel Front BFJE89 Rear B-J445A9-131

Typhoon Nozzle



Best suited for general cleaning, de-scaling,
and cutting grease from lines 6" to 24" Diameter.

UEMSI Part #	Size NPT	Description	Jet Degrees	GPM	PSI
RT-6651	3/4"	Typhoon 3 Front Rotating/6 Rear		35 to 45	1675 to 2000
* Replacement Jet Stainless Steel All RT-760					
RT-6652	3/4"	Typhoon 3 Front Rotating/6 Rear		50 to 65	1675 to 2000
* Replacement Jet Stainless Steel All RT-760					

Tungsten Carbide Sanitary Nozzle



Best suited for general cleaning of most debris from lines.

UEMSI Part #	Size NPT	Description	Jet Degrees	GPM	PSI
U58756CDC	3/4"	Sanitary 6 Rear	30°	50	2500
* Replacement jet Carbide TCO-.095					
U58756BDC	1"	Tungsten Carbide Sanitary 6 Rear	30°	50	2500
* Replacement Jet Carbide All Carbide TCO-.095					
U58756BEB	1"	Tungsten Carbide Sanitary 6 Rear	30°	55	2000
* Replacement Jet Carbide All Carbide TCO-.100					
U58756BFB	1"	Tungsten Carbide Sanitary 6 Rear	30°	60	2000
* Replacement Jet Carbide All Carbide TCO-.105					
U58756BFC	1"	Tungsten Carbide Sanitary 6 Rear	30°	60	2500
* Replacement Jet Carbide All Carbide TCO-.105					
U58756BGB	1"	Tungsten Carbide Sanitary 6 Rear	30°	65	2000
* Replacement Jet Carbide All Carbide TCO-.110					
U58756BJB	1"	Tungsten Carbide Sanitary 6 Rear	30°	80	2000
* Replacement Jet Carbide All Carbide TCO-.135					
U58756BJC	1"	Tungsten Carbide Sanitary 6 Rear	30°	80	2500
* Replacement Jet Carbide All Carbide TCO-.135					
U60306BFB	1"	Tungsten Carbide Sanitary 6 Rear	15°	60	2000
* Replacement Jet Carbide All Carbide TCO-.105					
U60306BFC	1"	Tungsten Carbide Sanitary 6 Rear	15°	60	2500
* Replacement Jet Carbide All Carbide TCO-.105					
U60306BGB	1"	Tungsten Carbide Sanitary 6 Rear	15°	65	2000
* Replacement Jet Carbide All Carbide TCO-.110					
U60306BJB	1"	Tungsten Carbide Sanitary 6 Rear	15°	80	2000
* Replacement Jet Carbide All Carbide TCO-.135					

Tungsten Carbide Sand Nozzle



Best suited for removal of sand, light gravel and dirt from lines.

UEMSI Part #	Size NPT	Description	Jet Degrees	GPM	PSI
U60307CDC	3/4"	Tungsten Carbide Sand 2F/6R	15°	50	2500
* Replacement Jet Carbide Front Carbide TCO-.076 Rear TCO-.095					
U58926BJB	1"	Tungsten Carbide Sand 2F/6R	30°	80	2000
* Replacement Jet Carbide Front Carbide TCO-.080 Rear TCO-.135					
U58926BJC	1"	Tungsten Carbide Sand 2F/6R	30°	80	2500
* Replacement Jet Carbide Front Carbide TCO-.080 Rear TCO-.135					
U60307BFB	1"	Tungsten Carbide Sand 2F/6R	15°	60	2000
* Replacement Jet Carbide Front Carbide TCO-.076 Rear TCO-.105					
U60307BFC	1"	Tungsten Carbide Sand 2F/6R	15°	60	2500
* Replacement Jet Carbide Front Carbide TCO-.076 Rear TCO-.105					
U60307BGB	1"	Tungsten Carbide Sand 2F/6R	15°	65	2000
* Replacement Jet Carbide Front Carbide TCO-.076 Rear TCO-.110					
U60307BHC	1"	Tungsten Carbide Sand 2F/6R	15°	70	2500
* Replacement Jet Carbide Front Carbide TCO-.076 Rear TCO-.110					
U60307BIC	1"	Tungsten Carbide Sand 2F/6R	15°	75	2500
* Replacement Jet Carbide Front Carbide TCO-.080 Rear TCO-.120					
U60307BJB	1"	Tungsten Carbide Sand 2F/6R	15°	80	2000
* Replacement Jet Carbide Front Carbide TCO-.080 Rear TCO-.135					
U60307BJC	1"	Tungsten Carbide Sand 2F/6R	15°	80	2500
* Replacement Jet Carbide Front Carbide TCO-.080 Rear TCO-.135					

Aluminum Grease Nozzle



Best suited for removal of heavy grease-filled lines from 8" to 30" lines.

UEMSI Part #	Size NPT	Description	Jet Degrees	GPM	PSI
B8-360	1"	Aluminum Grease 1Front/6Rear	17°	50 to 65	1675 to 2000
* Replacement Jet Stainless Steel Front BFJ-.054 Rear B-J460A83					
B8-380	1"	Aluminum Grease 1Front/6Rear	17°	80	1675 to 2000
* Replacement Jet Stainless Steel Front BFJ-.076 Rear B-J480A83					

Tungsten Carbide Penetrator Nozzle



Best suited for general cleaning, breaking up clogs and semi-plugged lines.

UEMSI Part #	Size NPT	Description	Jet Degrees	GPM	PSI
U58927CFB	3/4"	Tungsten Carbide Penetrator 1F/6R	30°	60	2000
* Replacement Jet Carbide Front Carbide TCO-.076 Rear TCO-.100					
U60308CGC	3/4"	Tungsten Carbide Penetrator 1F/6R	15°	65	2500
* Replacement Jet Carbide Front Carbide TCO-.076 Rear TCO-.105					
U58927BDB	1"	Tungsten Carbide Penetrator 1F/6R	30°	50	2000
* Replacement Jet Carbide Front Carbide TCO-.076 Rear TCO-.090					
U58927BDC	1"	Tungsten Carbide Penetrator 1F/6R	30°	50	2500
* Replacement Jet Carbide Front Carbide TCO-.076 Rear TCO-.090					
U58927BFB	1"	Tungsten Carbide Penetrator 1F/6R	30°	60	2000
* Replacement Jet Carbide Front Carbide TCO-.076 Rear TCO-.100					
U58927BFC	1"	Tungsten Carbide Penetrator 1F/6R	30°	60	2500
* Replacement Jet Carbide Front Carbide TCO-.076 Rear TCO-.100					
U58927BGC	1"	Tungsten Carbide Penetrator 1F/6R	30°	65	2500
* Replacement Jet Carbide Front Carbide TCO-.076 Rear TCO-.105					
U58927BJB	1"	Tungsten Carbide Penetrator 1F/6R	30°	80	2000
* Replacement Jet Carbide Front Carbide TCO-.076 Rear TCO-.125					
U60308BFB	1"	Tungsten Carbide Penetrator 1F/6R	15°	60	2000
* Replacement Jet Carbide Front Carbide TCO-.076 Rear TCO-.100					
U60308BGB	1"	Tungsten Carbide Penetrator 1F/6R	15°	65	2000
Replacement Jet Carbide Front Carbide TCO-.076 Rear TCO-.105					
U60308BJB	1"	Tungsten Carbide Penetrator 1F/6R	15°	80	2000
Replacement Jet Carbide Front Carbide TCO-.076 Rear TCO-.110/.135					

Penetrator Lance Tip Nozzle



Best suited for general cleaning, breaking up clogs and semi-plugged lines.

UEMSI Part #	Size NPT	Description	Jet Degrees	GPM	PSI
A3-1260	1"	Lance Tip Penetrator 1F/4S/6R	12°	60 to 65	1675 to 2000
A3-1280	1"	Lance Tip Penetrator 1F/4s/6r	12°	80	1675 to 2000

Aluminum Sand Nozzle



Best suited for removal of sand, gravel and dirt from lines 8" to 24" Diameter.

UEMSI Part #	Size NPT	Description	Jet Degrees	GPM	PSI
A1-160	1"	Aluminum Sand 1Front/8Rear	24°	50 to 65	1675 to 2000
* Replacement Jet Stainless Steel Front BFJ-.054 Rear B-J460A91					
A1-180	1"	Aluminum Sand 1Front/8Rear	24°	80	1675 to 2000
* Replacement Jet Stainless Steel Front BFJ-.076 Rear B-J480A91					
A9-11260	1"	Aluminum Sand 1Front/16 Dual Rear	17°/24°	50 to 65	1675 to 2000
*Replacement Jet Stainless Steel Front BFJ-.054 Rear B-J460A91					
A9-11280	1"	Aluminum Sand 1Front/16 Dual Rear	17°/24°	80	1675 to 2000
* Replacement Jet Stainless Steel Front BFJ-.076 Rear B-J480A91					

Hustler Cleaning Nozzle



Best suited for general cleaning of most debris from lines.

UEMSI Part #	Size NPT	Description	Jet Degrees	GPM	PSI
UEZ30.075	3/4"	Hustler Cleaning 1Front/8Rear	30°	65	2000
* Replacement Jet Carbide All Carbide Jets-CI-.078 Inserts-ENZ-.140					
UEZ30.075.50	3/4"	Hustler Cleaning 1Front/8Rear	30°	50	3000
* Replacement Jet Carbide All Carbide Jets-CI-.062 Inserts-ENZ-.140					
UEZ30.100.50	1"	Hustler Cleaning 8Rear	30°	50	3000
* Replacement Jet Carbide All Jets-CI-.140 Inserts-ENZ-.140					
UEZ30.100.65.2	1"	Hustler Cleaning 8Rear	30°	65	2000
* Replacement Jets Carbide (4) CI-.078 / (4) CI-.086 Inserts-ENZ-.140					
UEZ30.100.80	1"	Hustler Cleaning 8Rear	30°	80	2000
* Replacement Jet Carbide All Jets-CI-.098 Inserts-ENZ-.140					

Hustler Grenade Nozzle



Best suited for general cleaning, sand and/or gravel filled lines.

UEMSI Part #	Size NPT	Description	Jet Degrees	GPM	PSI
UEZ40.075.40	3/4"	Hustler Grenade NFJ	10°/30°	40	2000
* Replacement Jet Carbide All Carbide Jets-CI-.096 Inserts-ENZ-.055					
UEZ40.075.50	3/4"	Hustler Grenade NFJ	10°/30°	50	3000
* Replacement Jet Carbide All Carbide Jets-CI-.062 Inserts-ENZ-.096					
UEZ40.100.50	1"	Hustler Grenade NFJ 10Rear	10°/30°	50	3000
* Replacement Jet Carbide All Jets-CI-.055 Inserts-ENZ-.096					
UEZ40.100.60	1"	Hustler Grenade NFJ 10Rear	10°/30°	60	2000
* Replacement Jet Carbide Fronts Jets-CI-.062/.078 Inserts-ENZ-.096					
UEZ40.100.80	1"	Hustler Grenade NFJ 10Rear	10°/30°	80	2000
* Replacement Jet Carbide All Jets-CI-.086 Inserts-ENZ-.096					
UEZ40.100A	1"	Hustler Grenade NFJ 10Rear	10°/30°	65	2000
* Replacement Jet Carbide All Jets-CI-.078 Inserts-ENZ-.096					
UEZ40.100FJ	1"	Hustler Grenade w/FJ 1F/10R	10°/30°	60	2000
* Replacement Jet Carbide Front Jets-CI-.062/.078 Inserts-ENZ-.096					
UEZ40.100FJ.50	1"	Hustler Grenade w/FJ 1F/10R	10°/30°	50	3000
* Replacement Jet Carbide All Jets-CI-.055 Inserts-ENZ-.096					
UEZ40.100FJ.80	1"	Hustler Grenade w/FJ 1F/10R	10°/30°	80	2000
* Replacement Jet Carbide All Jets-CI-.086 Inserts-ENZ-.096					

Big Pete Nozzle



This 28 pound nozzle is designed for Heavy cleaning of lines 24" to 48" diameter lines.

UEMSI Part #	Size NPT	Description	Jet Degrees	GPM	PSI
BP-301256	1"	Big Pete 1Front/12Rear	17°/24°	55 to 60	1675 to 2000
* Replacement Jet Stainless Steel Front BP-JF-60 Rear BP-J125					
BP-301280	1"	Big Pete 1Front/12Rear	17°/24°	80	1675 to 2000
* Replacement Jet Stainless Steel Front BP-JF-80 Rear BP-J128					

Hustler Chisel Nozzle



Best suited to cut and break blockages, remove clogs and clean semi-plugged lines.

UEMSI Part #	Size NPT	Description	Jet Degrees	GPM	PSI
UEZ60.075.30	3/4"	Hustler Chisel 1Front/6Rear	30°	30	3000
* Replacement Jet Carbide Front CI-.050 Rear CI-050L					
* Replacement Insert Carbide Front ENZ-.080 Rear ENZ-.140					
UEZ60.075.40	3/4"	Hustler Chisel 1Front/6Rear	30°	40	2000
* Replacement Jet Front CI-.050 Rear CI-050L					
* Replacement Insert Front ENZ-.080 Rear ENZ-.140					
UEZ60.075.50	3/4"	Hustler Chisel 1Front/6Rear	30°	50	3000
* Replacement Jet Carbide Front CI-.050 Rear CI-062					
* Replacement Insert Carbide Front ENZ-.080 Rear ENZ-.140					
UEZ60.100L	1"	Hustler Chisel (Large) 5F/6R	30°	60	2000
* Replacement Jet Carbide Front CI-.055 Rear CI-.078					
* Replacement Insert Carbide ENZ-.140x3125/ENZ.096					
UEZ60.100L-50	1"	Hustler Chisel (Large) 5F/6R	30°	50	3000
* Replacement Jet Carbide Front CI-.050L Rear CI-.055					
* Replacement Insert Carbide ENZ-.140x3125/ENZ.096					
UEZ60.100L-65	1"	Hustler Chisel (Large) 5F/6R 28	30°	65	2000
* Replacement Jet Carbide Front CI-.055 Rear CI-.086					
* Replacement Insert Carbide ENZ-.140x3125/ENZ.096					
UEZ60.100L-80	1"	Hustler Chisel (Large) 5F/6R	30°	80	2000
* Replacement Jet Carbide Front CI-.062 Rear CI-.098					
* Replacement Insert Carbide ENZ-.140x3125/ENZ.096					

Aluminum Storm Sewer Nozzle



Best suited for heavy cleaning of sand, dirt and grit from lines 8" to 24" diameter.

UEMSI Part #	Size NPT	Description	Jet Degrees	GPM	PSI
U36058A260	1"	#10 Aluminum Storm 8 Rear		50 to 65	1675 to 2000
* Replacement Jet Stainless Steel Rear U40797					
U36058A280	1"	#10 Aluminum Storm 8 Rear		80	1675 to 2000
* Replacement Jet Stainless Steel Rear U-357C					
U36058A350	1"	#10 Aluminum Storm 8 Rear		50 to 65	3000
* Replacement Jet Stainless Steel Rear U40797A					

Ellipse Nozzle



Best suited for blockages, offset joints and tight bend to remove most debris from lines.

UEMSI Part #	Size NPT	Description	Jet Degrees	GPM	PSI
AT136150	1"	Ellipse 1 Front/8 Rear	15°	60	2000
* Replacement Jet Stainless Steel Front AT136150-60 Rear AT136150.001					
AT136150-80	1"	Ellipse 1 Front/8Rear	15°	80	2500
* Replacement Jet Front AT136150-80 Rear AT136150.001					

Penetrator Nozzle



Best suited for general cleaning, breaking up clogs and semi-plugged lines.

UEMSI Part #	Size NPT	Description	Jet Degrees	GPM	PSI
A3-145	1"	Penetrator 1Front/6Rear	12°	35 to 45	1675 to 2000
A3-150	1"	Penetrator 1Front/6Rear	12°	50	1675 to 2000
A3-160	1"	Penetrator 1Front/6Rear	12°	60 to 65	1675 to 2000
A3-160-3000	1"	Penetrator 1Front/6Rear	12°	60	3000
A3-180	1"	Penetrator 1Front/6Rear	12°	80	1675 to 2000

Mini-Storm/Sand Nozzle



Best suited for offset joints and tight bends to remove most debris from lines.

UEMSI Part #	Size NPT	Description	Jet Degrees	GPM	PSI
A3-12260	1"	Mini Storm/Sand 1Front/16Rear	17°/24°	50 to 65	1675 to 2000
A3-12280	1"	Mini Storm/Sand 1Front/16Rear	17°/24°	80	1675 to 2000

Radial Bullet Nozzle



Best suited for general cleaning of most debris from lines.

UEMSI Part #	Size NPT	Description	Jet Degrees	GPM	PSI
A4-245-3000	1"	Radial Bullet 1Front/6Rear	18°	45	3000
A4-250-3000	1"	Radial Bullet 1Front/6Rear	18°	50	3000
A4-260	1"	Radial Bullet 1Front/6Rear	18°	60	2000
A4-280	1"	Radial Bullet 1Front/6Rear	18°	80	2000
A4-2A45	1"	Radial Bullet 1Front/6Rear	30°	45	2000
A4-2A50-3000	1"	Radial Bullet 1Front/6Rear	30°	50	3000
A4-2A60	1"	Radial Bullet 1Front/6Rear	30°	60	2000
A4-2A80	1"	Radial Bullet 1Front/6Rear	30°	80	2000
A4-2N45	1"	Radial Bullet 6Rear	18°	45	2000
A4-2N50-3000	1"	Radial Bullet 6Rear	18°	50	3000
A4-2N60	1"	Radial Bullet 6Rear	18°	60	2000
A4-2N80	1"	Radial Bullet 6Rear	18°	80	2000
A4-2NA45	1"	Radial Bullet 6Rear	30°	45	2000
A4-2NA50-3000	1"	Radial Bullet 6Rear	30°	50	3000
A4-2NA60	1"	Radial Bullet 6Rear	30°	60	2000
A4-2NA80	1"	Radial Bullet 6Rear	30°	80	2000
B1-15	1 1/4"	Radial Bullet w/ Front Jet 1F/5R	18°	50	2000
B1-18	1 1/4"	Radial Bullet w/ Front Jet 1F/5R	18°	80	2000
B1-1N5	1 1/4"	Radial Bullet w/o Front Jet 5Rear	18°	50	2000
B1-1N8	1 1/4"	Radial Bullet w/o Front Jet 5Rear	18°	80	2000
B1-25	1 1/4"	Radial Bullet w/ Front Jet 1F/5R	35°	50	2000
B1-28	1 1/4"	Radial Bullet w/ Front Jet 1F/5R	35°	80	2000
B1-2N5	1 1/4"	Radial Bullet w/o Front Jet 5Rear	35°	50	2000
B1-2N8	1 1/4"	Radial Bullet w/o Front Jet 5Rear	35°	80	2000

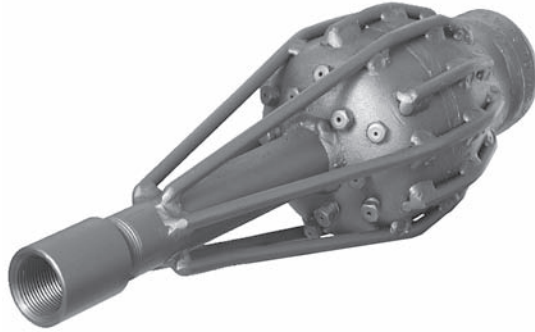
Intruder Nozzle



Best suited for removing sand, gravel, dirt, soap clogs and grease from lines 8" to 30" diameter lines.

UEMSI Part #	Size NPT	Description	Jet Degrees	GPM	PSI
IT-160	1"	Intruder 1Front/3Rear		60	2000
* Replacement Jet Stainless Steel Rear U40797C					
IT-160-3000	1"	Intruder 1Front/3Rear		60	3000
* Replacement Jet Stainless Steel Rear U40797D					
IT-180	1"	Intruder 1Front/3Rear		80	2000
* Replacement Jet Stainless Steel Rear U40797B					

Petee Nozzle



This 12 pound nozzle is designed for Heavy cleaning of lines 15" to 30" diameter.

UEMSI Part #	Size NPT	Description	Jet Degrees	GPM	PSI
P100256	1"	Petee 1Front/12Rear	17°/24°	60 to 65	1675 to 2000
* Replacement Jet Stainless Steel Front PFJ-60 Rear P-J2156					
P100280	1"	Petee 1Front/12Rear	17°/24°	80	1675 to 2000
* Replacement Jet Stainless Steel Front PFJ-80 Rear P-J2180					

Sanitary Nozzle



Best suited for general cleaning of most debris from lines.

UEMSI Part #	Size NPT	Description	Jet Degrees	GPM	PSI
U29343-A2	1"	Sanitary 6 Rear	30°	60	1675 to 2000
U29343-B2	1"	Sanitary 6 Rear	30°	50	1675 to 2000
U29343-C	1"	Sanitary 6 Rear	30°	80	1675 to 2000
U44233-A2	1"	Sanitary 6 Rear	15°	60	1675 to 2000
U44233-B2	1"	Sanitary 6 Rear	15°	50	1675 to 2000

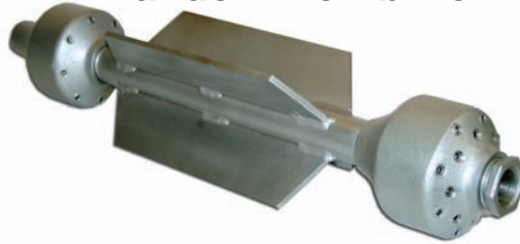
Steel Sand Nozzle



Best suited for removing heavy sand from lines 8" to 24" diameter.

UEMSI Part #	Size NPT	Description	Jet Degrees	GPM	PSI
B5-180	1"	Steel/Sand 2Front/6Rear	12°	80	1675 to 2000
U40585	1"	Steel/Sand 2Front/6Rear	12°	52	2000
U44234	1"	Steel/Sand 2Front/6Rear	12°	60	2000

Tandem Bomb Nozzle



Best suited for Heavy cleaning of debris, sand and gravel for 8" to 24" lines.

UEMSI Part #	Size NPT	Description	Jet Degrees	GPM	PSI
A9-1228	1"	Tandem Bomb 1F/F8-24/8R	24°	80	1675 to 2000
* Replacement Jet Stainless Steel Front BFJ-.076 Rear B-J480A91					
A9-1326	1"	Tandem Bomb 1Front/16Rear	17°/24°	60 to 65	1675 to 2000
* Replacement Jet Stainless Steel Front BFJ-.054 Rear B-J460A9-132					
A9-1328	1"	Tandem Bomb 1Front/16Rear	17°/24°	80	1675 to 2000
* Replacement Jet Stainless Steel Front BFJ-.076 Rear B-J480A9-132					

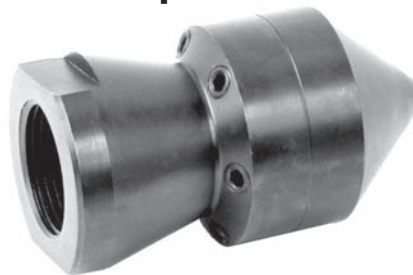
Typhoon Nozzle



Best suited for general cleaning, de-scaling and cutting grease from lines 8" to 24" diameter.

UEMSI Part #	Size NPT	Description	Jet Degrees	GPM	PSI
RT-8651	1"	Typhoon 3 Front Rotating/6 Rear		50 to 65	1250 to 1675
* Replacement Jet Stainless Steel All RT-760					
RT-8652	1"	Typhoon 3 Front Rotating/6 Rear		50 to 65	1675 to 2000
* Replacement Jet Stainless Steel All RT-760					
RT-8802	1"	Typhoon 3 Front Rotating/ 6 Rear		80	1675 to 2000
* Replacement Jet Stainless Steel All RT-780					

General Purpose Nozzle



Best suited for general cleaning of 12' to 30" lines.

UEMSI Part #	Size NPT	Description	Jet Degrees	GPM	PSI
U58929BFB	1"	General Purpose 3"		60	2000
* Replacement Jet All Carbide Jets-TCO-.105 Inserts-U58929.001					
U58929BJB	1"	General Purpose 3"		80	2000
* Replacement Jet All Carbide Jets-TCO-.135 Inserts-U25929.001					
U58929BJC	1"	General Purpose 3"		80	2500
* Replacement Jet All Carbide Jets-TCO-.135 Inserts-U25929.001					

Bulldozer Nozzle



This penetrating nozzle does Heavy cleaning of lines 12" to 30" diameter.

UEMSI Part #	Size NPT	Description	Jet Degrees	GPM	PSI
UE48216-60	1"	Bulldozer 1Front/6Rear		60	Up to 2000
* Replacement Jet Carbide Front Carbide CI.050L Rear TCO-.076/TCO-.095					
* Replacement Inserts Carbide Front ENZ-.096 Rear ENZ-.160					
UE48216-80	1"	Bulldozer 1Front/6Rear		80	2000
* Replacement Jet Carbide Front Carbide CI.046 Rear TCO-.110/TCO.120					
* Replacement Insert Carbide Front ENZ-.096 Rear ENZ-.160					
UE48220-60	1 1/4"	Bulldozer 1Front/6Rear		60	2000
* Replacement Jet Carbide Front Carbide Jet-TCO-.096 Inserts-ENZ-.160					
UE48220-80	1 1/4"	Bulldozer 1Front/6Rear		80	2000
* Replacement Jet Carbide Front Carbide Jet-TCO-.096 Inserts-ENZ-.160					

Blue Streak (Small) Nozzle



Best suited for general to heavy cleaning of most debris from 15" to 36" lines.

UEMSI Part #	Size NPT	Description	Jet Degrees	GPM	PSI
UE48226-60	1"	Blue Streak 1Front/10Rear		60	2000
* Replacement Jets Front CI-.050L Rear TCO-.080					
* Replacement Insert Front ENZ-.096 Rear ENZ-.160					
UE48226-80	1"	Blue Streak 1Front/10Rear		80	2000
* Replacement Jets Front CI-.050L Rear TCO-.086					
* Replacement Insert Front ENZ-.096 Rear ENZ-.160					



JET PAK™

Nozzle Packs

UEMSI values it's customer's input. When it comes to nozzles, you have spoken and UEMSI listened. UEMSI now offers a solution to give you the best price on nozzles, and packaging them in such a way so that you always have the right tool for the job.

UEMSI has developed the JET-PAK nozzle packages. The JET-PAK kits combine the most popular nozzles into a sturdy carrying case at a great price. We offer JET-PAK kits ranging in size from 1/8" to 1" and 2000-4000 PSI.

Part # G2-Kit:

1/8" 4000 PSI

Nozzle Group Total of 8 Nozzles
Includes all 8 nozzles we offer
- 1 each of the following part
number: G2-33, G2-34, G2-
35, G2-36, G2-303, G2-304,
G2 -305, G2-306

Part # G25-56:

1/4" 5-6 GPM @ 4000 PSI

Nozzle Group Total
of 8 Nozzles

Includes 8 of our best selling
nozzles - 1 each of the following
part numbers: G7-44, G7-304 and 2
each of: G0-14, G7-34, & G7-404



Part # G25-34:

1/4" 3-4 GPM @ 4000 PSI

Nozzle Group Total of 8 Nozzles

Includes 8 of our best selling noz-
zles - 1 each of the following part
number: G7-33 & G7-303 and
2 each of: G0-13, G7-43 & G7-
403

Part # G25-710:

1/4" 7-10 GPM @ 4000 PSI

Nozzle Group Total
of 8 Nozzles

Includes 8 of our best selling
nozzles - 1 each of the following part
numbers: G7-35, G7-46, G7-305, G7-406,
G0-16 & G7-306 and 2 each of: G0-15

JET PAK™

Nozzle Packs

Part # G375-34:

3/8" 3-4 GPM @ 4000 PSI
Nozzle Group Total
of 6 Nozzles

Includes all 6 of the
best selling nozzles
-1 each of the fol-
lowing part num-
bers: G5-13, G8-33,
G8-303, & G8-43 and
2 each of: G8-403



Part # G375-56:

3/8" 5-6 GPM @ 4000 PSI
Nozzle Group Total
of 6 Nozzles

Includes all 6 of the
best selling nozzles
-1 each of the fol-
lowing part num-
bers: G5-14, G8-34,
G8-304, G8-404 and 2
each of: G8-44

Part # G375-710:

3/8" 7-10 GPM @ 4000 PSI
Nozzle Group Total
of 6 Nozzles

Includes all 6 of the best selling nozzles
-1 each of the following part numbers: G5-
15, G8-305, G8-45, & G8-405 and 2 each of:
G8-35

Remember JET-PAK Nozzle Packs are pre-
packed and substitutions are not allowed!
Order Online 24/7 at www.uemsi.com

Part # F815-Kit:

1/2" 8-15 GPM @ 4000 PSI
Nozzle Group Total of 6 Nozzles
Includes 6 of the best selling
nozzles - 2 each of the following
part numbers: F1-115, F1-1115,
& F5-315



Part # F1525-Kit:

1/2" 8-15 GPM @ 4000 PSI
Nozzle Group Total of 6 Nozzles
Includes 6 of the best selling
nozzles - 2 each of the following
part numbers: F1-125, F1-1125,
& F5-325

Part # U58-12-60-2000:

**3/4" Carbide Nozzle Kit
60 GPM @ 2000 PSI**

Includes all 3 of the best selling nozzles -1 each of the following part numbers: U58927CFB, U58756CFB, & U58926CFB



Part # UEZ-12-50-3000:

**3/4" Hustler Nozzle Kit
50 GPM @ 3000 PSI**

Includes all 3 of the best selling nozzles -1 each of the following part numbers: UEZ30.075.50, UEZ40.075.50, & UEZ60.075.50

Part # UEZ-16-65-2000:

**1" Hustler Nozzle Kit
65 GPM @ 2000 PSI**

Includes all 4 of the best selling nozzles -1 each of the following part numbers: UEZ30.100.65.2, UEZ40.100A, & UEZ60.100.65.2, UEZ60.100L-65



Part # U58-16-80-2500:

**1" Carbide Nozzle Kit
80 GPM @ 2500 PSI**

Includes all 4 of the best selling nozzles -1 each of the following part numbers: U58927BJC, U58756BJC, U58929BJC, & U589926BJC

Part # U58-16-60-2000:

**1" Carbide Nozzle Kit
60 GPM @ 2000 PSI**

Includes all 4 of the best selling nozzles -1 each of the following part numbers: U58927BFB, U58756BFB, U58929BFB, & U58926BFB

Part # UEZ-16-50-3000:

**1" Hustler Nozzle Kit
50 GPM @ 3000 PSI**

Includes all 4 of the best selling nozzles -1 each of the following part numbers: UEZ30.100.50, UEZ40.100.50, & UEZ60.100.50, UEZ60.100L-50

Part # U58-16-80-3000:

**1" Carbide Nozzle Kit
80 GPM @ 3000 PSI**

Includes all 4 of the best selling nozzles -1 each of the following part numbers: U58927BJB, U58756BJB, U58929BJB, & U58926BJB

JET PAK™

Nozzle Packs

Part # AB-16-60-2000:

1" Steel Nozzle Kit
60 GPM @ 2000 PSI
Includes all 6 of the best selling
nozzles -1 each of the follow-
ing part numbers: A3-160,
A3-1260, A4-260, A4-2N60,
A4-2A60, & A4-2NA60

Part # E0-12-35-1800:

3/4" Steel Nozzle Kit
35 to 45 GPM @ 1800 PSI
Includes all 6 of the best
selling nozzles -1 each of
the following part num-
bers: E0-335, E0-3A35,
E0-3N35, E0-3NA35, E0-
435, & E2-335



Part # AB-16-50-3000:

1" Steel Nozzle Kit
50 GPM @ 3000 PSI
Includes all 6 of the best selling
nozzles -1 each of the follow-
ing part numbers: A3-150-3000,
A4-250-3000, A4-2A50-3000,
A4-2N50-3000, 4-2NA50-3000,
& C0-155V

Part # E0-12-35-3000:

3/4" Steel Nozzle Kit
35 GPM @ 3000 PSI
Includes all 6 of the best
selling nozzles -1 each of
the following part num-
bers: E0-335V, E0-3A35V,
E0-3N35V, E0-3NA35V, E0-
435V, & E2-335V

Nozzles “Made to Order” - Vactor® Style Nozzles

All of the following nozzles are available to order to your specifications. Use the charts below to “*Special Make*” your nozzle -- NO RETURNS! Please allow 10 working days for us to make this for you.

Tungsten Carbide Sanitary Nozzle



Tungsten Carbide Sand Nozzle



Master Number: U58756	Tungsten Carbide Sanitary	30°	6 Rear Jets
Master Number: U630306	Tungsten Carbide Sanitary	15°	6 Rear Jets

Master Number: U58926	Tungsten Carbide Sand	30°	2 Front / 6 Rear Jets
Master Number: U60307	Tungsten Carbide Sand	15°	2 Front / 6 Rear Jets

Tungsten Carbide Penetrator



Master Number: U58927	Tungsten Carbide Penetrator	30°	1 Front / 6 Rear Jets
Master Number: U60308	Tungsten Carbide Penetrator	15°	1 Front / 6 Rear Jets

Use the following charts for the nozzle you need as instructed:
Master Number followed by the appropriate 3 letters
Example 3/4” 50 GPM @ 2500 would be:
U60308CDC - This would be a Tungsten Carbide Penetrator

Size	GPM (Flow)	PSI
3/4” (C)	35 (A) 40 (B)	2000 (B)
1” (B)	45 (C) 50 (D)	2500 (C)
	55 (E) 60 (F)	3000 (D)
	65 (G) 80 (J)	

3/4” is available in GPM letters A thru E and all 3 PSI
1” is available in GPM letter C thru J in all 3 PSI

