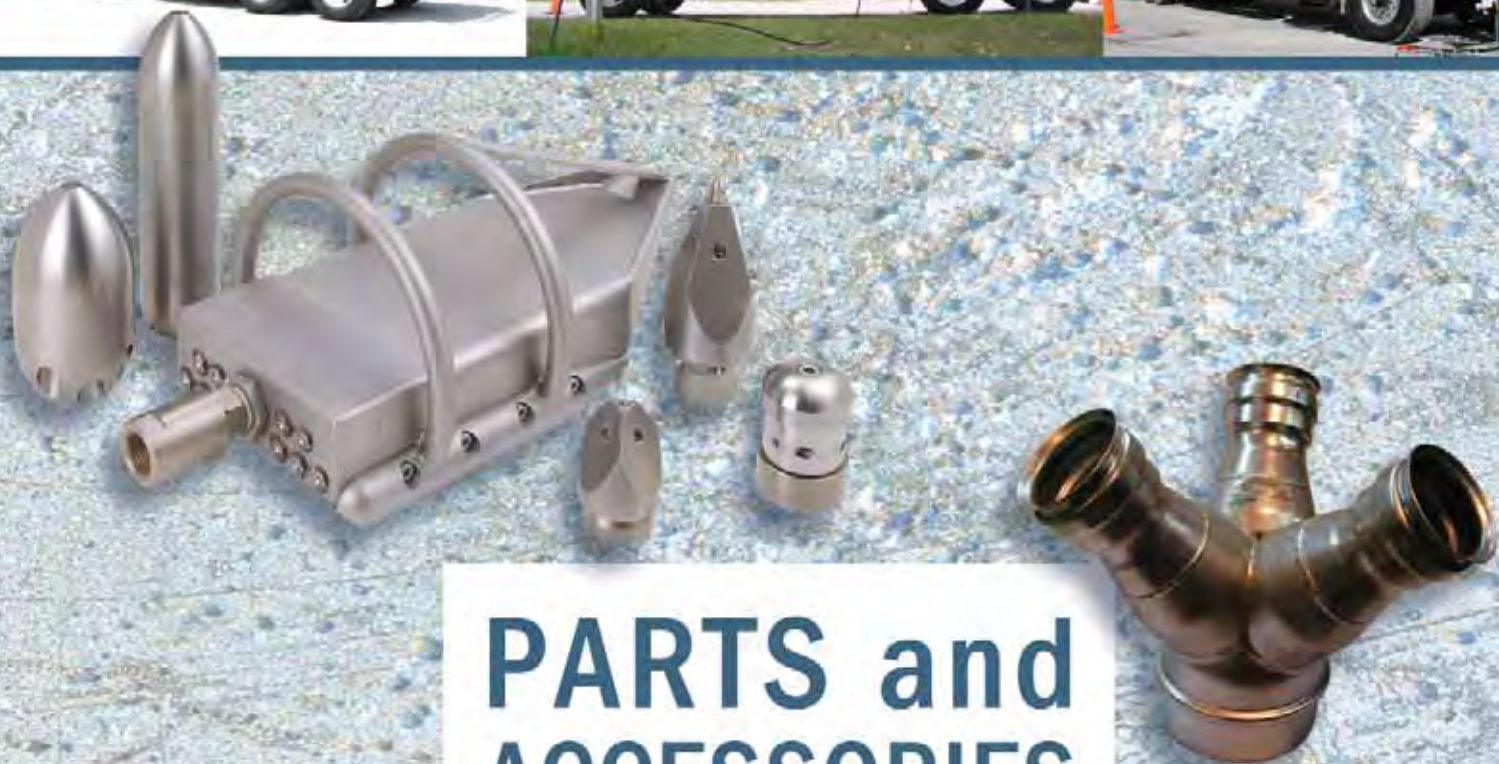


SUPERSUCKER®

CAMEL®

MUD DOG®

CAMEL JET®



PARTS and ACCESSORIES



Super Products

Worldwide Vacuum Technology
Since 1972

2007-A



800-837-9711
www.superproductscorp.com

Leader in Worldwide Vacuum Technology for over 34 years!



PARTS AND ACCESSORIES TABLE OF CONTENTS

Aluminum Weld End	29	Lateral Cleaning Kit (Portable).....	17
Ball Valves	23	Leader Hose	14
Boom Cannon	31	Lights & Accessories	25
Boom Elbow	37	Lock Rings	27
Butterfly Valves	24	Lubrication Recommendations	3 - 4
Camlock Fittings	30	Male Hose End & Mender	13
Circular Operators Handle	37	Manhole Hook	18
Clamps	28	Manhole Safety Screen	15
Cleanout Ports	33	Micro Switch	23
Compression Couplings	43	Nozzles	5 - 9
Connectors (“Y” & “Tri”)	33	Polyethylene Drain Hose	29
Couplers	29	Port Adaptor	32
Crevice Tool	38	Port Hose Clamp & Chain	22
Crown Nozzle	38	Pressure Regulator	19
Dig Tubes	37	Reducers (Aluminum & Steel)	32
Drain Hose	35	Regulator Rebuild Kit	19
Elbows	31	Retainers	42
F.E. Myers Rebuild Kits	19 - 21	Roller Guide & Shoe	14
Filter Bags	39 - 42	Root Cutter Blades	11
Float Switch	23	Rubber Elbow Assembly (Light & Heavy)	34
Floor Nozzle	37	Serial Number Identification	4
Fluidizing Tube	37	Sewer Camera	10
Galvanized Elbows	31	Sewer Hole Ring	15
Gaskets	27	Sewer Hose	12
Gate Valves	24	Sewer Hose Guide & Wiper	14
Gauges	26	Special T	34
Handguns & Accessories	16	Steel Connecting “Y” Pipes	42
Handlight	18	Steel Couplers	29
Heavy-Duty Hose	35	Steel Elbows	43
Heavy-Duty Port Hose	35	Steel Tubes for Perm. Vac.	42
High Temperature Hose	34	Suction Outlet, Perm. Cone Fttg.	43
Hose Plugs	32	Super Dig Tube	15
Hose Reel (Retractable)	17	Super Tubes (Steel & Aluminum)	36
Hose, Sewer	12	Swage Dies, Pusher & Tool Kits	13
Hose, Vacuum	34	Swivel Joints	17
Hydrant Fill Hose & Wrench	18	Vacuum Breaker	38
Hydraulic Control Valves	24	Water Pumps & Repair Kits	20 - 22
Kanaflex Hose	34	Wet Ring	38

Lubrication Recommendations:

Component	Lubricant	
Body Pressurization Blower	<ul style="list-style-type: none"> • SAE 10W40 Engine Oil 	<ul style="list-style-type: none"> • Super Products Spec 3060-00010
Boom Power Pack	<ul style="list-style-type: none"> • Automatic Transmission Fluid • Super Products Spec 3060-00005 	<ul style="list-style-type: none"> • Type A Dexron 3
Diesel Engine Crankcase Oil	<ul style="list-style-type: none"> • SAE 15W40 Diesel Engine Oil 	<ul style="list-style-type: none"> • Super Products Spec 3060-00007
Grease	<ul style="list-style-type: none"> • General Purpose NGLI Gr 2EP • White Lithium 	<ul style="list-style-type: none"> • Super Products Spec 3060-00022 • Super Products Spec 3060-00023
Hydraulic System	Ambient Temperatures:	
-60°F to 40°F	<ul style="list-style-type: none"> • ISO 10 Hydraulic Oil 	<ul style="list-style-type: none"> • Super Products Spec 3060-00004
0°F to 100°F	<ul style="list-style-type: none"> • ISO 46 Hydraulic Oil 	<ul style="list-style-type: none"> • Super Products Spec 3000-00950
60°F to 120°F	<ul style="list-style-type: none"> • ISO 68 Hydraulic Oil 	<ul style="list-style-type: none"> • Super Products Spec 3000-01573
Splitshaft (Camel/Cameljet Only)	Ambient Temperatures:	
-65°F to 0°	<ul style="list-style-type: none"> • SAE 75W90 Arctic Gear Oil 	<ul style="list-style-type: none"> • Super Products Spec 3060-00031
0° and above	<ul style="list-style-type: none"> • SAE 80W90 Gear Oil 	<ul style="list-style-type: none"> • Super Products Spec 3000-00490
Transfer Case (SuperSucker Only)	<i>Webster/Span/Durst Cases</i>	
Ambient Temperatures:		
-65°F to 0°F	<ul style="list-style-type: none"> • SAE 75W90 Artic Gear Oil 	<ul style="list-style-type: none"> • Super Products Spec 3060-00031
-20°F to 60°F	<ul style="list-style-type: none"> • ISO 150 R&O Gear Oil 	<ul style="list-style-type: none"> • Super Products Spec 3060-00012
50°F and above	<ul style="list-style-type: none"> • SAE 80W90 Gear Oil 	
<i>Dana/Cotta Cases</i>		
Ambient Temperatures:		
-65°F to 0°F	<ul style="list-style-type: none"> • SAE 75W90 Artic Gear Oil 	<ul style="list-style-type: none"> • Super Products Spec 3060-00031
-20°F to 60°F	<ul style="list-style-type: none"> • ISO 220 EP Gear Oil 	<ul style="list-style-type: none"> • Super Products Spec 3060-00032
+50°F and above	<ul style="list-style-type: none"> • SAE 80W90 Gear Oil 	<ul style="list-style-type: none"> • Super Products Spec 3060-00490
Trash Pump	<ul style="list-style-type: none"> • Refer to Hydraulic System Spec 	
Washdown Pump	<ul style="list-style-type: none"> • ISO 68 Hydraulic Oil 	<ul style="list-style-type: none"> • Super Products Spec 3000-01573
Water Pump	<ul style="list-style-type: none"> • Use ISO 220 EP Gear Oil with Molybdenum Disulfide Additive • Or use Mobile SCH 630 (ISO 220) 	<ul style="list-style-type: none"> • Super Products Spec 3060-00032 • Super Products Spec 3000-00826 • Super Products Spec 3060-00041



Roots/Dresser Rotary Lubrication Recommendations:

Rotary blowers require a premium grade, non-detergent oil with rust, oxidation and foam inhibitors.

Splash Lubricated Blowers	Ambient Temperature °F	ISO Viscosity
	90° to 120°	320
	32° to 90°	220
	0° to 32°	100

Pressure Lubricated Blowers	Ambient Temperature °F	ISO Viscosity
	32° to 120°	220
	Below 32°*	100

Note: *Depending upon operating temperature may require lube oil heater in sump or possibly lower viscosity oil.

RGS-HVB High Vacuum Booster require an oil with a vapor pressure of 0.1 micron Hg. or less @ 180°F and 1.8 micron Hg. or less @ 250°F. Both Sunoco Sunvis and Roots Synthetic Lubricant meets this requirement.

Suggested brands of lubrications

ISO – 320

Sunoco Sunvis 9320
Mobil DTE AA
Exxon NUTO 320
CITGO Pacemaker 320
Texaco Regal R & O 320
Roots Synthetic Lubricant 320

ISO – 220

Sunoco Sunvis 9220
Mobil DTE BB
Exxon Teresstic 220
CITGO Pacemaker 220
Texaco Regal R & O 220
Roots Synthetic Lubricant 220

ISO – 100

Sunoco Sunvis 9100
Mobil DTE 18M
Shell Turbo-T 100
Exxon NUTO 100
CITGO Pacemaker 100
Texas Regal R & O 100
Roots Synthetic Lubricant 100

Grease for URAI/URAI-J units

Shell Darina Grease NLGI grade 2

Grease for XA seals

Dow Corning Silicon Grease #44

When ordering parts... Always have the unit serial number of your truck available.

This is where you can find your Super Products serial number on your truck:
Supersucker® – 1992 - Current: Bottom front of forward most LH clean-out door frame. Pre-1992: Below main control panel on support tubing.

Camel® – 1983 - Current: LH side of the power frame on horizontal tube towards front. Pre-1983: LH side of power frame on front face of vertical angle.

Mud Dog® – All Years: Forward LH edge of water tank tray.

All serial numbers are either eight or nine digits long, depending on the unit type.

The serial number denotes several characteristics as indicated in this example:

S/N: 02 01 1537
Year of Model Unit
Production Produced Number

S/N 02011537 - is a Model 5227 Supersucker® Built in 2002 and is unit 1537.

The third and fourth (and sometimes the fifth) digits of the unit serial number indicate which model is produced and which vacuum pump is used.

NOZZLES

Grenade Nozzle



Highly efficient all around cleaner made of extremely wear resistant, tempered stainless steel, utilizing "Optimized 3D Hydro Mechanics"

- 4 - 15° Rear Jets
- 4 - 25° Rear Jets
- Ceramic Nozzle Inserts, Std.
- 3 Year Warranty

Part No.	gpm/psi	Hose Connection	Weight	Pipe Diameter
6000-02065-5030		1"	5 lbs.	6-15"
6000-02065-6520		1"	5 lbs.	6-15"
6000-02065-8020		1"	5 lbs.	6-15"

Chisel Nozzle



Excellent at difficult cleaning processes, especially when pipe deformations caused by outer pressure or total blockage are present.

- 4 - 12° Rear Jets
- 6 - 30° Rear Jets
- Stainless Steel Inserts, Std.
- Optional Ceramic Inserts
- 1 Year Warranty

Part No.	gpm/psi	Hose Connection	Weight	Pipe Diameter
6000-02011-5030		1"	2 lbs.	8-12"
6000-02011-6520		1"	2 lbs.	8-12"
6000-02011-8020		1"	2 lbs.	8-12"

Superior Penetrator Nozzle



Extremely tight propulsion characteristics, very efficient dirt and debris extractions. One forward-jet, 6 rear jets at 12°. "Optimized 3D Hydro Mechanics", tempered stainless steel.

- 1 - Forward Jet
- 6 - 12° Rear Jets
- Ceramic Nozzle Inserts, Std.
- 3 Year Warranty

Part No.	gpm/psi	Hose Connection	Weight	Pipe Diameter
6000-02012-5030		1"	10 lbs.	6-15"
6000-02012-6520		1"	10 lbs.	6-15"
6000-02012-8020		1"	10 lbs.	6-15"

Ultimate Chisel Nozzle



Recommended for large sewer/storm water lines, this nozzle has many advantages: changeable drill point, penetrates solid root and debris masses.

- 6 - 12° Forward Jets
- 6 - 30° Rear Jets
- Stainless Steel Inserts, Std.
- Optional Ceramic Inserts
- 1 Year Warranty

Part No.	gpm/psi	Hose Connection	Weight	Pipe Diameter
6000-02014-6520		1"	5.5 lbs.	8-15"
6000-02014-8020		1"	5.5 lbs.	12" and up



Grand Slam Nozzle



Reduced water consumption/increased productivity, reducing operating costs. Saves time through unequaled cleaning efficiency, longer service life due to ceramic nozzle inserts, extreme cleaning power through "Optimized 3D Hydro Mechanics."

Grand Slam

- 4 - 12° Rear Jets
- 4 - 18° Rear Jets
- Ceramic Insert, Std.
- 3 Year Warranty

Super Grand Slam (not shown)

- For Large Sewer and Storm Water Lines
- 6 - 15° Rear Jets
- 6 - 30° Rear Jets
- Ceramic Insert, Std.
- 3 Year Warranty

Grand Slam Part No.	gpm/psi	Hose Connection	Weight	Pipe Diameter
6000-02017-5030		1"	13 lbs.	8-15"
6000-02017-6520		1"	13 lbs.	8-15"
6000-02017-8020		1"	13 lbs.	8-15"

Super Grand Slam Part No.	gpm/psi	Hose Connection	Weight	Pipe Diameter
6000-02013-6520		1"	13 lbs.	12-36"
6000-02013-8020		1"	13 lbs.	12-36"

Radial Cleaning Nozzle



High performance nozzle manufactured for streak-free radial cleaning of sewer lines, 6 fan jets guarantee thorough overlapping cleaning with "Optimized 3D Hydro Mechanics."

- 6 - 45° Fan Jets
- 6 - 15° Rear Jets
- Stainless Steel Inserts, Std.
- 1 Year Warranty

Part No.	gpm/psi	Hose Connection	Weight	Pipe Diameter
6000-02072-6520		1"	12 lbs.	8-20"
6000-02072-8020		1"	12 lbs.	8-20"

Rotor Nozzle



Assures perfect sewer cleaning. Uniform motion of the rotating body allows constant and thorough cleaning of the interior wall of the pipe. The rotor nozzle is successfully

used for removing grease, crusts and scale of all kinds. **Does not need lubrication.**

- 4 - 90°/75°/60°/25° Rotation Jets
- Stainless Steel Inserts, Std.
- 1 Year Warranty

Part No.	gpm/psi	Hose Connection	Weight	Pipe Diameter
6000-02023-5030		1"	3 lbs.	8-12"
6000-02023-6520		1"	3 lbs.	8-12"
6000-02023-8020		1"	3 lbs.	8-12"

Large Flying Nozzle



Extremely high efficiency unequaled propulsion, the narrow jet incidence of 7° guarantees tremendous hauling of deposits from sewer lines in mountainous terrain using "Optimized 3D Hydro Mechanics."

- Ceramic Insert, Std.
- 8 - 7° Rear Jets
- 3 Year Warranty

Part No.	gpm/psi	Hose Connection	Weight	Pipe Diameter
6000-02075-5030		1"	12 lbs.	6-15"
6000-02075-6520		1"	12 lbs.	6-15"
6000-02075-8020		1"	12 lbs.	6-15"

Small Flying Nozzle



Same as Large Flying Nozzle, except for smaller pipes.

- 8 - 7° Rear Jets
- Ceramic Insert, Std.
- 3 Year Warranty

Part No.	gpm/psi	Hose Connection	Weight	Pipe Diameter
6000-02076-5030		1"	5 lbs.	6-10"
6000-02076-6520		1"	5 lbs.	6-15"
6000-02076-8020		1"	5 lbs.	6-15"

Pipe Wolf II



Unique turbine driven cutter can reach 6,000 rpm. Extremely efficient on total obstructions caused by roots, silt, grease, etc. Succeeds where hydrodynamic tool fails. **No lubrication needed.**

- Stainless Steel Inserts, Std.
- 1 Year Warranty

Part No.	gpm/psi	Hose Connection	Weight
6000-02074-5030		1"	5 lbs.
6000-02074-6520		1"	5 lbs.
6000-02074-8020		1"	5 lbs.

Standard Nozzle



- Wear-resistant Material
- Light and Maneuverable
- Inexpensive, Yet Highly Efficient
- 4-15° Spray Pattern
- 4-25° Spray Pattern

Forward Jet Part No.	gpm/psi	Hose Connection	Weight	Pipe Diameter
6000-02015-5030		1"	1 lbs.	6-10"
6000-02015-6520		1"	1 lbs.	6-10"
6000-02015-8020		1"	1 lbs.	6-10"

Please Have Your
Serial Number Available
When Contacting Us
For Part Information
or Part Numbers

Nozzle Starter Kit



KIT INCLUDES 1 EACH OF:

- Grenade Nozzle
- Chisel Nozzle
- Rotor Nozzle
- Ultimate Chisel Nozzle
- Small Flying Nozzle
- Pipe Wolf Nozzle
- Nozzle Case

Part No.	gpm/psi	Description
9810-00322-6520		Nozzle Kit - 65 GPM
9810-00323-8020		Nozzle Kit - 80 GPM



Dredger Nozzle



6 JETS Part No.	gpm/psi	Hose Connection	Weight	Pipe Diameter
6000-02047-6520		1"	25 lbs.	8-20"
6000-02047-8020		1"	25 lbs.	8-20"

8 JETS Part No.	gpm/psi	Hose Connection	Weight	Pipe Diameter
6000-02048-6520		1"	29 lbs.	10-24"
6000-02048-8020		1"	29 lbs.	10-24"

10 JETS Part No.	gpm/psi	Hose Connection	Weight	Pipe Diameter
6000-02018-6520		1"	53 lbs.	12-40"
6000-02018-8020		1"	53 lbs.	12-40"

14 JETS Part No.	gpm/psi	Hose Connection	Weight	Pipe Diameter
6000-02049-8020		1"	62 lbs.	20" and up

For removal of heavy solids, silt, sand and sludge at the bottom of a pipe. For use in pipe 8" and up, with the jets at 5° to 20° angles. Comes with "Optimized 3D Hydro Mechanics."

- Ceramic Inserts, Std.
- 3 Year Warranty

Turbo II



The chain retainer is driven by a high performance turbine; thus achieving maximum results in the removal of roots, grease and mineral deposits from sewer lines. The chains are not rigid and do not damage the pipes.

- 1 Year Warranty

Part No.	gpm/psi	Hose Connection	Pipe Diameter
3000-02981-5030		1"	6-8"
3000-02981-6520		1"	6-8"
3000-02981-8020		1"	6-8"

ACCESSORIES FOR TURBO CHAIN CUTTERS

Part No.	Description
6000-02086	6" Guide Skid for Turbo I
6000-02087	8" Guide Skid for Turbo II
6000-02088	6" Chain Retainer for Turbo I
6000-02089	8" Chain Retainer for Turbo II
6000-02090	6 ft Replacement Chain

• Replacement Chain Turbo I & II sold in 6' only.
(Part #6000-02022)

Turbo II w/ Flexible Skid



You can switch from smaller size to larger sizes in

less than 5 minutes. It uses the same high RPM turbine and chain as the fixed skid turbo retainers. Low maintenance, no lubrication required.

- 1 Year Warranty

Part No.	gpm/psi	Hose Connection	Pipe Diameter
6000-02021-5030		1"	6-12"
6000-02021-6520		1"	6-12"
6000-02021-8020		1"	6-12"

Turbo III w/Flexible Skid



You can switch from smaller size to larger sizes in less than 5 minutes. It uses the same high RPM turbine and chain as the fixed skid turbo retainers. Low maintenance, no lubrication required.

- 1 Year Warranty

Part No.	Pipe Diameter
6000-02083	10-30"

Black Blaster



The inexpensive, yet highly efficient all around sewer cleaning nozzle comes with or without guide skids

6"/8" and 10"/15" sewer lines. The optimized hydro mechanics in the nozzle chamber in conjunction with 18° angle of jet incidence offer an impressive traction and cleaning efficiency.

- Stainless Steel Inserts, Std.
- 1 Year Warranty

Part No.	Description	Pipe Diameter
6000-02206-6520	Nozzle	6" - 15"
6000-02206-8020	Nozzle	8" - 20"
6000-02078	Guide Skid	6" & 8"
6000-02080	Guide Skid	10" & 12"

Black Star



The Black Star nozzle is an excellent choice at affordable pricing for general sewer cleaning. The optimized hydro mechanics in the nozzle chamber and the nozzle inserts with 5 each 15°/25° angle of jet incidence provides tremendous traction and cleaning efficiency.

- Stainless Steel Inserts, Std.
- 1 Year Warranty

Part No.	Description	Pipe Diameter
6000-02207-6520	Nozzle	6" - 15"
6000-02207-8020	Nozzle	8" - 20"

Primus



The Primus is operated by water coming from a pressurized hose. No lubrication needed for low maintenance and operator ease of use. For potable or reclaimed water with flow rates of 18 gpm – 80 gpm, for 6" to 20" pipes, and operating pressures of 2000 – 3600 PSI Max.

- 1 Year Warranty

Part No.	gpm/psi	Hose Connection
6000-02270-1830		1/2"
6000-02270-5030		3/4"
6000-02270-6520	(60 GPM)	1"
6000-02270-8020	(80 GPM)	1"



Milling Cutters



Capable of removing the toughest deposits such as: hard grease, concrete, and scale of all kinds, even tuberculation in cast iron pipes. Protruding tabs will be cut gently without damaging the line. Milling cutter head can be removed and replaced with a chain retainer or twister head for the removal of roots and hardened grease. No lubrication required; Sizes 4"-20" sewer lines available! 6" Milling cutter conversion kit available (Part # 6000-02020)

- 1 Year Warranty

Part No.	gpm/psi	Hose Connection	Weight	Pipe Diameter
6000-02019-5030		1"	34 lbs.	4-20"
6000-02019-6520		1"	34 lbs.	4-20"
6000-02019-8020		1"	34 lbs.	4-20"

All our Turbo Chain Cutters, Milling Cutters, Rotor Nozzles, including Pipe Wolf, etc. do not require lubrication, which is an important advantage over other brands.

Furthermore, only our nozzles are offered with "Optimized 3D Hydro Mechanics" in our Grand Slam, Super Slam, Superior Penetrator, Cleaning, Flying, and Dredger nozzles.

Sewer Camera

The 1100's ergonomic design reflects the need for a small, lightweight and rugged unit that will meet a variety of inspection requirements and features:

- 10.4" LCD screen for easy viewing. Extra bright screen features a protective screen overlay with anti-reflective coating.
- Color camera for 2.5-6" pipes
- 150ft pushrod standard
- Built in powerful 512Hz Sonde. Optional locator provides depth measurements up to 12 feet.
- On-screen distance counter
- NiMH rechargeable battery provides up to 4 hours of operation
- Integrated VCR with protective door for video/audio recording and playback
- Portable: Handle extends for easy transport
- Keypad provides complete control of the unit.
- Integrated microphone and speakers

Included Accessories:

- Accessory Bag
- 12 Volt Car Adapter
- 3-4" Skid
- VCR Remote
- 110v AC Power Cord

SPECIFICATIONS:

System:
 Dimensions 18" x 20" x 15"
 Weight 40 lbs (100ft)
 50 lbs (150ft)
 55 lbs (200ft)
 65 lbs (300ft)
 Control Unit:
 Dimensions 12" x 16" x 7"
 Monitor 10.4" LCD
 Power AC/DC/Battery
 Camera:
 Size 1.5" Dia.
 Sensitivity 1 lux @ F1.2
 Lens Sapphier with/auto iris
 Light LED (replaceable)
 Construction Stainless Steel
 Connector ... Gold Plated Slipping
 Sonde:
 Frequency 512 Hz

Intelligent Battery System:

Type NiMH
 Running Time 4 hours



Optional Accessories:

- Locator for 512 Hz Sonde
- 4-6" Skid
- 100, 200, 300 ft. interchangeable reel
- Sunshade
- Debris bag for reel
- Command module extension cable for remote reel operation.

Root Cutter Kit



Heavy-duty Root Cutter with sled-type skids and storage box.

Part No.	Description	Weight
3000-00445	Root Cutter Kit	80 lbs.

Items Included in Kit	Quantity
Root Cutter Motor	1
Saws	3
Skids	3

Instructions and metal toolbox included.

Part No.	Description	Weight
6000-01595	Root Cutter Motor Only	18 lbs.

Root Cutter Blades & Chuck Assembly



Replacement blades packaged in sets of three. Chuck is purchased separately.

CHUCK ASSEMBLY

Part No.	Weight
3000-01077	2.5 lbs.

SPRING STEEL BLADES

Part No.	Blade	Weight
3000-02054	4"	0.75 lbs.
3000-02055	6"	1.0 lbs.
3000-02056	8"	1.30 lbs.
3000-02057	10"	1.40 lbs.
3000-02058	12"	1.65 lbs.
3000-02059	15"	1.95 lbs.
3000-02060	18"	2.10 lbs.

Root Cutter Saw Blade



Comes with chuck attached to saw blade.

Part No.	Size	Weight
3000-00450	4"	1.8 lbs
3000-00451	6"	2.0 lbs.
3000-00452	8"	3.0 lbs.
3000-00453	10"	3.6 lbs.
3000-00454	12"	4.5 lbs.
3000-00455	15"	6.5 lbs.

**Please Have Your
Serial Number Available
When Contacting Us
For Part Information
or Part Numbers**



CAUTION

SEWER HOSE AND HOSE REPAIR FITTINGS:

Sewer hose, repair fittings and tools are manufactured to National Solid Wastes Management Association (NSWMA) and/or Waste Equipment Technology Association (WASTEC – formerly WEMI) standards and specifications.

To protect against PERSONAL INJURY or DEATH, inspect and repair the sewer hose only per these industry-recognized standards.

Complete information regarding these standards is available either in your operator's manual or by contacting Super Products, your Super Products Distributor or find WASTEC's ANSI Z245 standards at www.wastec.org.

Sewer Hose



Manufactured to strict standards for sewer cleaning, with male ends included. Only use approved menders, fittings and tools as published by NSWMA. Sewer hose is color coded by the manufacturer to identify operating pressures. The inner tube color identified the manufacturer and the outer jacket color the working pressure. Available in 400', 500', 600' and 800'. When ordering, please supply hose length in the digits shown with an "X". Specify length in FEET ONLY. Maximum 1000 ft. per roll. Example: 400 feet = Part No. 3675-40000. If a 1000 foot roll is desired, use 99999 for the last five digits.

- Yellow Inner Tube = Piranha™*
 - Blue Inner Tube = Aeroquip™**
 - Grey Inner Tube = Parker/Dayco™
 - Weight Per Foot: 1/2" - 0.19 lbs 3/4" - .028 lbs 1" - 0.38 lbs 1-1/4" - 0.40 lbs
- *Piranha is a registered trademark of DSM Engineering Plastic Products Corp. **Aeroquip is a registered trademark of Trinova Corp.

Pressure Rating: 2500 PSI 17240 KPa / 173 Bars Working
6250 PSI 43100 KPa / 431 Bars Burst

Part No.	Diameter	Inner Tube	Outer Jacket
3660-XXX00	0.75"	Yellow	Orange Outer Jacket
3665-XXX00	1.0"	Yellow	
3985-XXX00	1.25"	Yellow	
3679-XXX00	1.0"	Blue	

Pressure Rating: 3000 PSI 20688 KPa / 207 Bars Working
7500 PSI 51720 KPa / 518 Bars Burst

Part No.	Diameter	Inner Tube	Outer Jacket
3680-XXX00	0.75"	Yellow	Blue Outer Jacket

Pressure Rating: 4000 PSI 27584 KPa / 276 Bars Working
9000 PSI 82752 KPa / 828 Bars Burst

Part No.	Diameter	Inner Tube	Outer Jacket
3675-XXX00	0.50"	Yellow	Red Outer Jacket
3986-XXX00	1.25"	Grey	Orange Outer Jacket
3987-XXX00	1.5"	Grey	

ARMOR BELT HOSE

Part No.	Diameter	Inner Tube	Outer Jacket
3728-XXX00	1.0"	Yellow	Orange Outer Jacket

Swage Tool Kits



Hydraulic (pictured)

Comes with two sets of dies, end pusher, fitting lube, jack handle, one male end, and one mender fitting. All parts comply with NSWMA Standards.

Specify diameter and hose manufacturer when ordering. For hose diameter: 5/8" 15.8mm 3/4" 19.0mm 1.0" 25.4mm

Hydraulic Part No.	Weight
3000-02339	65 lbs.

Specify diameter and hose manufacturer when ordering. Impact wrench or other power source required.

Mechanical - Horizontal (not pictured)

Comes with two sets of dies, end pusher, fitting lube, one male end, and one mender fitting. All parts comply with NSWMA Standards.

Mechanical-Horizontal Part No.	Kit	Weight
3000-02336	Without Wrenches	45 lbs.

Same as the above except two long handled wrenches are included. Wrenches can be purchased separately. Specify diameter and hose manufacturer when ordering.

Mechanical-Horizontal Part No.	Kit	Weight
3000-02337	With Wrenches	47 lbs.
3000-02338	Wrenches Only	2 lbs.

Swage Dies & Pushers



All parts comply with NSWMA Standards. You must follow NSWMA Standards when ordering or installing any parts to repair your sewer hose.

SWAGE DIES (2 Pieces)

Piranha™* Part No.	Aeroquip™** Part No.	Parker-Dayco™ Part No.	Diameter For Hose	Weight
3000-02303	3000-02312	3000-02324	0.50"	2.5 lbs.
3000-02304	3000-02313	3000-02325	0.75"	2.0 lbs.
3000-02305	3000-02314	3000-02326	1.0"	1.8 lbs.
3000-003073			1.25"	

PUSHER (1 Piece)

Piranha™* Part No.	Aeroquip™** Part No.	Parker-Dayco™ Part No.	Diameter For Hose	Weight
3000-02306	3000-02315	3000-02327	0.50"	2.5 lbs.
3000-02307	3000-02316	3000-02328	0.75"	2.2 lbs.
3000-02308	3000-02317	3000-02329	1.0"	2.0 lbs.
3000-03074			1.25"	

Male Hose End & Mender

All parts comply with NSWMA Standards. You must follow NSWMA Standards when ordering or installing any parts to repair your sewer hose.



MALE HOSE ENDS

Piranha™* Part No.	Aeroquip™** Part No.	Parker-Dayco™ Part No.	Diameter For Hose	Weight
3000-02309	3000-02318	3000-02330	0.50"	0.3 lbs.
3000-02222	3000-02319	3000-02331	0.75"	0.5 lbs.
3000-02292	3000-02320	3000-02332	1.0"	0.7 lbs.
3000-03071			1.25"	

MENDER

Piranha™* Part No.	Aeroquip™** Part No.	Parker-Dayco™ Part No.	Diameter For Hose	Weight
3000-02310	3000-02321	3000-02333	0.50"	0.3 lbs.
3000-02223	3000-02322	3000-02334	0.75"	0.5 lbs.
3000-02311	3000-02323	3000-02335	1.0"	0.7 lbs.
3000-03072			1.25"	



Leader Hose



Provides an easily replaceable and flexible section at the end of your sewer hose where maximum wear occurs. Hose has a rubber outer cover with wire reinforcement, a

female swivel joint on one end and male pipe threads on the other. Meets NSWMA standards.

Part No.	Hose ID	Length	Weight
9010-00448-0003	1.25"	10'	12 lbs.
9010-00448-0007	1.25"	20'	24 lbs.
9010-00448-0002	1.00"	10'	10 lbs.
9010-00448-0006	1.00"	20'	20 lbs.
9010-00448-0009	1.00"	25'	25 lbs.
9010-00448-0001	0.75"	10'	7.5 lbs.
9010-00448-0005	0.75"	20'	15 lbs.
9010-00448-0004	0.625"	10'	6 lbs.
9010-00448-0008	0.625"	20'	12 lbs.

Sewer Hose Guide (Tiger Tail)

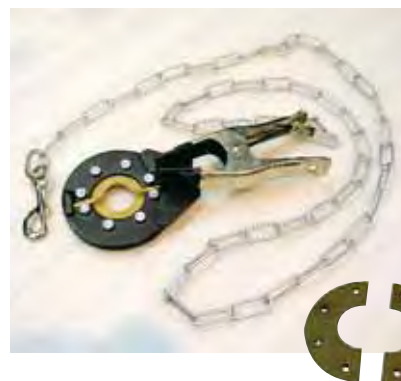


For protecting sewer hose into pipes, laterals, or around corners. Smooth bore hose with cuffs and polyethylene

rope. Measurement shown is for inside diameter of hose.

Part No.	Diameter	Rope Length	Weight
3000-02601	3.0"	25'	6 lbs.

Sewer Hose Wiper



Wipes excess water and grease from sewer hose, so that it does not drip onto you or the truck.

Part No.	Description	Hose Diameter	Weight
9010-00106		1.0"	2.6 lbs.
9010-00401		1.25"	3.0 lbs.
3500-00193	Rubber Scraper Inserts		

Upper Roller Shoe

PHOTO NOT AVAILABLE

Steel frame with nylon rollers for guiding sewer hose down a manhole without kinking or damaging hose. Works with

hoses from 5/8" diameter to 1-1/4" diameter.

Part No.	Weight
9410-00001	12 lbs.

Lower Roller Guide



Steel frame with nylon rollers for guiding sewer hose into pipes. Protects the hose from being cut or kinked when making the bend up the sewer line. Handgrips and extensions included. Three piece pipe extensions, overall length is 16' (4.8m). Works with hoses

from 5/8" diameter to 1-1/4" diameter.

Part No.	Weight
3000-02226	45 lbs.

Manhole Safety Screen



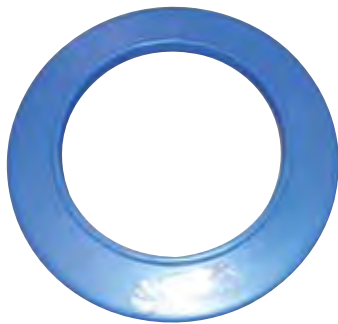
Advantages and Features:

- Effectively seals the manhole against contaminated sewer mist and odors.
- Weighs less than 20 lbs. making it easy to carry and use.
- 1/2" thick polycarbonate window allows technicians to see inside manhole.
- Adds a measure of protection from falling accidents (can hold up to 300 lbs)
- Sized to fit most manholes / 23.5 OD
- Creates a safer, cleaner and happier work environment.
- Prevents objects from falling into sewer.

Designed to protect technicians from contaminants. Effectively seals the manhole against contaminated sewer mist and odors. Sized to fit most manholes.

Part No.	Description
6000-02059	Manhole Safety Screen

Sewer Hole Ring



Creates a smooth surface around the manhole for your hose. Also adapts the manhole safety screen for larger manholes.

Part No.	Description
3000-03013	Sewer Hole Ring

Super Dig Tube



Pothole, trench and hydro excavate with your Camel or other combination machine.

Special Features:

- Easy one man operation handle
- Up to 28" Hg
- Up to 80 GPM water flow

Part No.	Size	Weight
9410-00926	4"	
9410-00927	6"	60.8 lbs.
9410-00855	8"	78.6 lbs.

**Please Have Your
Serial Number Available
When Contacting Us
For Part Information
or Part Numbers**



Handgun with Extension & Nozzle



Attaches to water source. Used for wash-down applications. Rated at 2000 psi (13792KPa / 138Bars) with a deadman's trigger.



Part No.	Description	Weight
9000-00654-0001	without hose	8 lbs.
9010-00424	with quick disconnect, 35' x 0.5" hose, adjustable tip.	18 lbs.
9000-00654-0002	with 35' x 0.5" hose and adjustable tip	18 lbs.

Part No.	Description
6000-01165	Female Quick Disconnect 1/2"
6000-01166	Male Quick Disconnect 1/2"

Part No.	Description
6000-00684	Female Coupler Quick Disconnect 1/2"
6000-00685	Male Coupler Quick Disconnect 1/2"

Part No.	Description
6000-01875	Adjustable Nozzle (new)

Part No.	Description
6000-01388	Adjustable Nozzle
3000-00338	Straight Nozzle

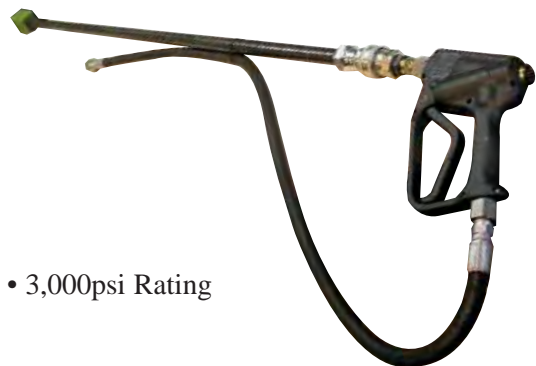
Handgun Hose



Heavy-duty hose with a rubber outer cover and wire braid reinforcement. With 0.50" Male N.P.T. ends included. Rated at 2300 psi.

Part No.	Length	Weight
3643-30000	25'	8 lbs.
3643-42000	35'	10 lbs.
3000-01507	100'	28 lbs.
3000-01201	150'	40 lbs.

Hydro-X Handgun



• 3,000psi Rating

Part No.	Description
9010-00788-0001	Hydro Excavation Hand Gun (Mud Dog)
9010-00788-0002	Hydro Excavation Hand Gun (Camel)
4500-00230	Nozzle, Green
6000-01914	Orifice 10.6 GPM @ 3000 PSI (Mud Dog)
3100-01171	Orifice 20 GPM @ 2000 PSI (Camel)
9010-00797	Extension - 5'

Retractable Hose Reel



Spring loaded hose reel with a live water center. Holds up to 50' of 0.50" hose.

- 2,000psi

Part No.	Description	Weight
6000-01315	Hose Reel	45 lbs.
7310-01991	Rotary Elbow	

Lateral Cleaning Kit - Portable



Includes: Dolly, 150' of 0.50" hose and 0.50" nozzle. Reel has a live water center and shut off valve.

Part No.	Hose Length	Weight
9450-00208	150'	75 lbs.

Breakdown of Kit:

Part No.	Description
3000-02156	Cart
3000-01201	Hose Only
7310-02200	Rotary Elbow (also used on 6000-01967)
6000-01025	2,000psi Hose Reel Bumper Mount

Swivel Joints



Pressure Rated: 6,000 PSI

Part No.	Description	Item	Weight
17624-000	1.0"	Rotary Elbow	4 lbs.
17624-020	1.0"	Packing Kit	



Pressure Rated: 3,000 PSI

6000-01647	1-1/4"	Rotary Elbow	
7310-01933		Seal Kit	
7310-01934		Bearing Kit	



Pressure Rated: 5,000 PSI

6081-00004	1"	90° Swivel	
------------	----	------------	--



Handlight



12 volt D.C. hand held light with attached cord. 200,000 candlepower spot light; 100,000 candlepower flood light.



Part No.	Type	Cord	Weight
5500-00235	Handlight Only		2.5 lbs.
9010-00074	4 Pin Plug (standard coil)	15'	3.0 lbs.
9010-00181	2 Blade Twist Plug (for retract cord)	15'	3.0 lbs.
9410-00232	Spotlight Handheld	15'	5.0 lbs.
9410-00233	Spotlight Handheld	25'	5.0 lbs.
9410-00234	Spotlight Handheld	50'	5.0 lbs.

Part No.	Description
5500-00605	2 Blade Twist Plug
5500-00606	2 Blade Twist Socket

Part No.	Description
5500-00134	4 Pole Socket
5500-00135	4 Pole Plug

Manhole Hook & Hydrant Wrench



Part No.	Description	Weight
3000-01244	Manhole Hook	4 lbs.
3000-01242	Hydrant Wrench	7 lbs.

Hydrant Fill Hose



Reinforced plastic or cotton hose for connecting to hydrants. One female 2.5" (63.5mm) N.P.T. swivel coupling and one female 2.5" (63.5mm) N.S.T. swivel coupling.

Part No.	Diameter	Length	Type	Weight
3500-00070	2.5"	15'	Plastic	8 lbs.
3500-00219	2.5"	25'	Plastic	13 lbs.
3500-00245	2.5"	50'	Plastic	26 lbs.
3500-00190	2.5"	15'	Cotton	10 lbs.
3500-00239	2.5"	25'	Cotton	14 lbs.
3500-00259	2.5"	50'	Cotton	28 lbs.

Part No.	Description	Diameter
3000-02834	Hydrant Fill Hose Coupler	2.5 NPT x 2.5 NST

Pressure Regulator



Water pressure regulator is adjustable and can be rebuilt.

Working Pressure: 0-2000psi (13792Kpa/138Bars)

Part No.	Diameter	Qty	Weight
6000-00588	Pressure Regulator (shown)	1	49.0 lbs.
6000-01069	Heavy Duty Regulator - 3000 PSI		
6000-01129	Heavy Duty Regulator - 4000 PSI		
6000-02122	Heavy Duty Regulator - 3000 PSI		

Regulator Rebuild Kit



Kit contains the most frequently ordered parts to rebuild an F.E. Myers™ pressure regulator. Parts for other F.E. Meyers regulators available, consult Super Products.

F.E. Meyers is a Registered Trademark of the Pentair Company.

Part No.	Description	Weight
9810-00194	Regulator Rebuild Kit	.85 lbs.

KIT INCLUDES:

Part No.	Description	Quantity
7310-01299	Valve	1
7310-01347	Screw	1
7310-01346	O-Ring	1
7310-01345	Gasket	1
7310-01343	Washer	1
7310-01342	Plunger Cup	1
7310-01344	O-Ring	1

F.E. Myers - Minor Rebuild Kit



Kit contains the most frequently ordered parts to rebuild the liquid end on a F.E. Myers™ D65-20 piston type water pump rated at 65 GPM 246 LPM at 2000 PSI (13792Kpa / 138Bars).

D65-20 Water Pump - Part No. 6000-00367

Part No.	Description	Weight
9810-00196	Minor Rebuild Kit	1.20 lbs.

KIT INCLUDES:

Part No.	Description	Quantity
7310-00667	Packing	3
7310-00670	Washer	3
7310-00680	O-Ring	3
7310-00682	O-Ring	3
7310-00684	Valve	6
7310-00674	O-Ring	3

F.E. Myers - Major Rebuild Kit



Kit contains the most frequently ordered parts to rebuild the liquid end on a F.E. Myers™ D65-20 piston type water pump rated at 65 GPM 246 LPM at 2000 PSI (13792Kpa / 138Bars).

D65-20 Water Pump - Part No. 6000-00367

Part No.	Description	Weight
9810-00195	Major Rebuild Kit	20.0 lbs.

KIT INCLUDES:

Part No.	Description	Quantity
7310-00667	Packing	3
7310-00670	Washer	3
7310-00671	Spring	3
7310-00664	Cap Screw	3
7310-00682	O-Ring	3
7310-00692	Cylinder Liner	3
9310-00013	Suction Valve Assembly	3
9310-00014	Discharge Valve Assembly	3
7310-00680	O-Ring	3
7310-00674	O-Ring	3



D65-20 Super Products Type Water Pump



Triplex positive displacement reciprocating piston water pump with continuous rating of 65 GPM (246 LPM) at 2000 PSI (13792 Kpa/138 Bars)

NOTE: Drive is determined by standing at rear gear end of water pump.

Part No.	Description	Qty	Weight
6000-01581	D65-20 Water Pump Right Hand Drive	1	675 lbs.
6000-01582	D65-20 Water Pump Left Hand Drive	1	675 lbs.

D65-20 Minor Rebuild Kit



Kit contains the most frequently ordered parts to rebuild the liquid end on a D65-20 Water Pump (Super Products) Part Numbers 6000-01581 and 6000-01582.

Part No.	Description	Weight
9810-00237	Minor Rebuild Kit	1.20 lbs.

KIT INCLUDES:

Part No.	Description	Quantity
7310-00667	Packing	3
7310-00670	Washer	3
7310-00680	O-Ring	3
7310-00682	O-Ring	3
7310-01863	Valve	6
7310-00674	O-Ring	3

D65-20 - Major Rebuild Kit



Kit contains the most frequently ordered parts to rebuild the liquid end on a D65-20 Water Pump (Super Products) Part Numbers 6000-01581 and 6000-01582.

Part No.	Description	Weight
9810-00238	Major Rebuild Kit	20.0 lbs.

KIT INCLUDES:

Part No.	Description	Quantity
7310-00667	Packing	3
7310-00670	Washer	3
7310-00671	Spring	3
7310-00664	Cap Screw	3
7310-00682	O-Ring	3
7310-00692	Cylinder Liner	3
9310-00080	Suction Valve Assembly	3
9310-00081	Discharge Valve Assembly	3
7310-00680	O-Ring	3
7310-00674	O-Ring	3
7310-01920	Valve Puller (For New Super Products Water Pump)	1
6000-00758	Drain Valve D65	1

**Please Have Your
Serial Number Available
When Contacting Us
For Part Information
or Part Numbers**

DP80-20 F.E. Myers™ Water Pump



Triplex positive displacement reciprocating plunger water pump with continuous rating of 80 GPM (302 LPM) at 2000 PSI (13792 Kpa/138 Bars)

Part No.	Description	Qty	Weight
6000-02070	DP80-20 Water Pump	1	690 lbs.

DP80-20 Minor Rebuild Kit



Kit contains the most frequently ordered parts to rebuild the liquid end on a DP80-20 F.E. Myers™ water pump.

F.E. Myers is a Registered Trademark of the Pentair Company.

Part No.	Description	Weight
9810-00198	Minor Rebuild Kit	1.80 lbs.

KIT INCLUDES:

Part No.	Description	Quantity
7310-01399	Packing	3
7310-01390	O-Ring	6
7310-01392	Valve	6
7310-01391	Backup Ring	6

DP80-20 Major Rebuild Kit



Kit contains the most frequently ordered parts to rebuild the liquid end on a DP80-20 F.E. Myers™ water pump.

F.E. Myers is a Registered Trademark of the Pentair Company.

Part No.	Description	Weight
9810-00197	Major Rebuild Kit	22.0 lbs.

KIT INCLUDES:

Part No.	Description	Quantity
7310-01399	Packing	3
7310-01390	O-Ring	6
7310-01404	Packing Spring	3
7310-01400	Spring Washer (packing)	3
7310-01391	Backup Ring	6
7310-01384	Oil Seal	6
7310-01392	Valve	6
7310-01393	Suction Valve Seat	3
7310-01394	Discharge Valve Seat	3
7310-01395	Spring	3
7310-00686	Compression Spring	3
7310-00687	Spring Retainer	6
7310-01396	Capscrew	6

OPTIONAL ACCESSORIES:

Part No.	Description
6000-01041	Drain Valve DP80
6000-00876	Adapter, 4-bolt DP80
5000-00031	Valve Seat Tool DP80



Replacement Liquid & Gear Ends for D65-20 & DP80-20 Water Pump



Complete liquid and gear ends are available for D65-20 and DP80-20 F.E. Myers™ water pumps. Rebuilt pumps are also available. Contact your Super Products dealer for availability and pricing. **Core required for rebuilt items.**



D65-20

Part No.	Description	Weight	Part No.	Description	Weight
7310-01875	Gear End - New	388 lbs.	7310-01876	Liquid End - New	287 lbs.
(Also used on D65-16 Pumps)		F.E. Meyers is a Registered Trademark of the Pentair Company.			



DP80-20



Part No.	Description	Weight	Part No.	Description	Weight
7310-01583	Gear End - New	388 lbs.	7310-01584	Liquid End - New	302 lbs.
			6000-00758	Drain Valve	

FMC Water Pump



Part No.	Description
6000-01944	FMC Water Pump 80 GPM @ 2500 PSI LH
706 lbs.	

Micro & Float Switch



Part No.	Description
5500-00039	Micro Switch

Part No.	Description
5500-00282	Float Switch

Part No.	Description
5500-00709	Micro Switch w/Actuator

Ball Valves



Part No.	Description
6000-01150	Ball Valve 1/2" 3000psi
6000-01151	Ball Valve 3/4" 3000psi
6000-01152	Ball Valve 1" 3000psi



Part No.	Description
6000-01840-0001	Ball Valve 1/4" 2000psi
6000-01840-0003	Ball Valve 1/2" 2000psi
6000-01840-0004	Ball Valve 3/4" 2000psi
6000-01840-0005	Ball Valve 1" 2000psi
6000-01840-0006	Ball Valve 1-1/4" 2000psi
6000-01840-0007	Ball Valve 1-1/2" 2000psi
6000-01840-0008	Ball Valve 2" 2000psi



Part No.	Description
6000-02131	Ball Valve, 3 Way, 1"npt, 5075psi



Part No.	Description
6000-01286	Ball Valve 1" 3000psi
7350-00201	Seal Kit



Part No.	Description
3100-01062	Sewer Valve 1-1/4" 3000psi
3100-01063	Return Valve 1-1/4" 3000psi



Part No.	Description
6000-01029-0001	Ball Valve 1/4" 1500psi
6000-01029-0002	Ball Valve 3/8" 1500psi
6000-01029-0003	Ball Valve 1/2" 1500psi
6000-01029-0004	Ball Valve 3/4" 1500psi
6000-01029-0005	Ball Valve 1" 1500psi
6000-01029-0006	Ball Valve 1-1/4" 1500psi
6000-01029-0007	Ball Valve 1-1/2" 1500psi
6000-01029-0008	Ball Valve 2" 1500psi



Butterfly Valves



Part No.	Description	Size	Weight
6000-01233	Valve	3"	9 lbs.
7310-01572	Handle	3"	2 lbs.
6000-00125	Valve w/Handle	4"	10 lbs.
6000-01232	Valve	5"	12 lbs.
7310-01598	Handle	5"	2 lbs.
6000-01557	Valve w/Handle	8"	20 lbs.

Gate Valves



Part No.	Description	Size	Weight
3000-01563	Gate Valve w/Handle	4"	15 lbs.
7330-00020	Handle Only	4"	2 lbs.



Part No.	Description	Size	Weight
3000-02505	Gate Valve w/Handle	6"	28 lbs.



Part No.	Description	Size
6000-00778	Gate Valve	6"
9800-00466	Handle	6"

Hydraulic Control Valves



Part No.	Description
6000-00077	Selector Valve



Part No.	Description
9010-00671	Hydraulic Control Valve



Part No.	Description
9000-00615	Hydraulic Control Valve



Part No.	Description
9010-00519	Hydraulic Control Valve



Part No.	Description
9010-00668	Hydraulic Control Valve



Part No.	Description
9010-00676	Reel Speed & Directional Valve

Lights & Accessories



Part No.	Description
5500-00761	Marker Light, Amber
5500-00762	Marker Light, Red



Part No.	Description
3000-00095	Reflector, Red
5500-00510	Reflector, Amber



Part No.	Description
5500-00478	Clearance Light, Red
5500-00472	Clearance Light, Amber



Part No.	Description
5500-00442	Tail & Stop Light



Part No.	Description
5500-01007	Boom Light



Part No.	Description
5500-01154	Strobe Light



Part No.	Description
5500-01049	Rotating Beacon



Part No.	Description
5500-00502	Arrow Board



Part No.	Description
5500-00011	Three Light Bar



Part No.	Description
3000-01871	Road Warning Kit (triangles)



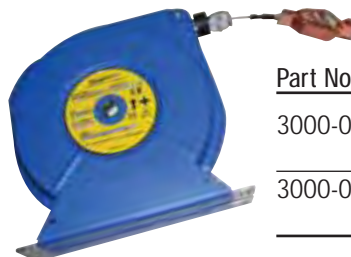
Part No.	Description
9000-00563	Safety Pin Supersucker Tailgate



Part No.	Description
3000-02084	Fire Extinguisher

MISC ACCESSORIES

Part No.	Description
3000-00312	Hold Down Strap (Bungee Cord)
3500-00408	CJ Mudflaps
3500-00232	Mud Flaps (pairs only)



Part No.	Description
3000-02580	Ground Reel w/Cable & Clamp (open reel)
3000-02613	Ground Reel w/Cable & Clamp (closed reel)



Gauges



Part No. Description
5500-00072 Hour Meter



Part No. Description
5500-00494 Tachometer/Hour Meter (0-3000rpm)



Part No. Description
5500-01141 Tachometer (0-3500rpm)



Part No. Description
5500-00779 Oil Pressure - Hi/Lo Shutdown (0-100psi)



Part No. Description
5500-00784 Ammeter



Part No. Description
5500-00955 Volt Meter



Part No. Description
6000-00260 Pressure (0-5000psi)



Part No. Description
6000-00261 Vacuum Gauge (0-30"Hg)



Part No. Description
6000-00524 Vacuum Gauge (0-30"Hg)



Part No. Description
6000-00546 Bag Condition Change



Part No. Description
6000-00795 Hydraulic Condition (0-60)
7300-00533 Hydraulic Condition (0-30)



Part No. Description
6000-01130 Water & Hyd (0-5000psi)
6000-01316 Freezeproof (0-5000psi)



Part No. Description
6000-00410 Air Pressure (0-160 psi) (Tensioning)



Part No. Description
6000-00076 Inline Filter (Bag Condition)



Part No. Description
6000-00536 4-Way Air Valve

Lock Ring for Aluminum Tubes



Quick acting, over-center type for securing tubes together.

ONLY FOR USE WITH ALUMINUM COUPLERS AND TUBING

Part No.	Diameter	Weight
3000-01295	4.0"	1.75 lbs.
3000-01784	5.0"	1.85 lbs.
3000-00824	6.0"	2.0 lbs.
3000-00825	8.0"	2.6 lbs.
3000-02276*	8.0"	

*Quick Change Clamp

Lock Ring for Steel Tubes



Quick acting, over-center type for securing tubes and hoses together.

ONLY FOR USE WITH STEEL COUPLINGS AND TUBES

Part No.	Diameter	Weight
3000-00012	4.0"	1.6 lbs.
3000-00011	6.0"	2.0 lbs.
3000-00010	8.0"	2.5 lbs.
3000-01118	10.0"	3.0 lbs.



LOCK RING WITH HANDLIFT

Part No.	Diameter	Weight
3000-02821	4.0"	1.6 lbs.
3000-01784	5.0"	1.85 lbs.
3000-02628	6.0"	2.0 lbs.

O-Ring Coupling Gaskets



Creates vacuum seal between male and female couplers. Eliminates the need for taping. Reduces set up or tear down time.

Part No.	Diameter	Weight
3500-00207	4.0"	0.10 lbs.
3500-00337	5.0"	0.20 lbs.
3500-00206	6.0"	0.20 lbs.
3500-00205	8.0"	0.20 lbs.

Flat Coupling Gaskets

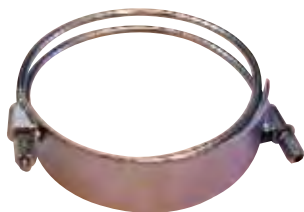


Fits inside female coupler to create vacuum seal between male and female couplers.

Part No.	Diameter	Weight
3500-00003	4.0"	0.20 lbs.
3500-00303	5.0"	0.20 lbs.
3500-00002	6.0"	0.30 lbs.
3500-00001	8.0"	0.30 lbs.
3500-00261	10.0"	0.40 lbs.
3500-00607	12.0"	



Heavy-Duty Spiral Clamp



For securing couplers to lightweight work hose. Works well with helical-coil type vacuum hose.



Part No.	Diameter	Weight
3000-02380	3.5"	
0258-00004	4.0"	1.0 lbs.
0258-00005	5.0"	1.6 lbs.
0258-00006	6.0"	2.0 lbs.
0258-00007	8.0"	2.3 lbs.
0258-00008	10.0"	2.8 lbs.
0258-00009	12.0"	3.0 lbs.

CLAMP WITH PEAR LINK

Part No.	Diameter
8510-00406	6.0"
8510-00407	8.0"

Port Hose Clamp & Chain



Clamp secures coupler to port hose. Excellent for attaching hose ends to hose with cuff. Chain connects lower end of port hose to truck for traveling.



Clamp and chain separate.

CLAMP

Part No.	Diameter	Weight
3000-02852	4.0"	
3000-02373	6.0"	5.2 lbs.
3000-00136	8.0"	6.0 lbs.

CHAIN

Part No.	Description	Weight
9010-00105K	Chain Assembly Intake Hose	

Part No.	Description
9200-03921	Kanaflex Hose & Clamp Assembly
9200-00671K	Port Hose & Clamp Assembly

Band Clamp



Heavy-duty, stainless steel clamp for securing couplers to hose. Not for use with Port Hose or where hose is to be suspended vertically.

Part No.	Diameter	Weight
3000-00043	2.5"	0.10 lbs.
3000-00042	4.0"	0.15 lbs.
3000-00041	6.0"	0.20 lbs.
3000-00040	8.0"	0.25 lbs.

Steel Couplers



For use with flexible vacuum hose or to replace bent or broken ends on steel tubing. Measurement is diameter of coupler end.



ZINC PLATED MALE

Part No.	Diameter	Weight
3000-00032	4"	2.3 lbs.
3000-01757	5"	2.8 lbs.
3000-00031	6"	3.6 lbs.
3000-00030	8"	5.5 lbs.
3000-01127	10"	8.25 lbs.

ZINC PLATED FEMALE

Part No.	Diameter	Weight
3000-00022	4"	2.1 lbs.
3000-01758	5"	2.6 lbs.
3000-00021	6"	3.5 lbs.
3000-00020	8"	5.5 lbs.
3000-01128	10"	8.25 lbs.

NON-PLATED MALE

Part No.	Diameter	Weight
3000-00543	4"	2.3 lbs.
3000-01756	5"	2.8 lbs.
3000-00544	6"	3.6 lbs.
3000-00545	8"	5.5 lbs.
3000-01117	10"	8.25 lbs.
3000-02912	12"	

NON-PLATED FEMALE

Part No.	Diameter	Weight
3000-00546	4"	2.1 lbs.
3000-00547	6"	3.5 lbs.
3000-00548	8"	5.5 lbs.
3000-00561	10"	8.25 lbs.
3000-02913	12"	

Coupler Set

Part No.	Description
3000-02727	4" Coupler Set w/Clamp & Gasket

Weld Ends

Weld-on ends replace bent or broken ends on aluminum or steel tubing. Measurement is diameter of coupler end.



ALUMINUM MALE

Part No.	Diameter/Metal	Weight
3000-00781	6" Aluminum	1.5 lbs.
3000-00783	8" Aluminum	1.95 lbs.
3000-02753	6" Steel	
3000-02755	8" Steel	

ALUMINUM FEMALE

Part No.	Diameter/Metal	Weight
3000-00782	6" Aluminum	2.15 lbs.
3000-00784	8" Aluminum	2.90 lbs.
3000-02754	6" Steel	
3000-02756	8" Steel	



Camlock Fittings



Part No.	Description	Size
0349-00008	Female Cam/ Male NPT	2-1/2"
0349-00009	Female Cam/ Male NPT	3"
0349-00010	Female Cam/ Male NPT	4"
0349-00012	Female Cam/ Male NPT	6"



Part No.	Description	Size
0487-00005	Female 90° w/Hose Shank	3"



Part No.	Description	Size
3000-02828	Reducer	4"(F) x 2"(M)
3000-02693	Reducer	6"(F) x 4"(M)
9000-00681	Reducer	8"(F) x 6"(M)



Part No.	Description	Size
0492-00002	Dust Cap	2"
3000-02694	Dust Cap	2-1/2"
3000-01557	Dust Cap	3"
6000-00150	Dust Cap	4"
0492-00003	Dust Cap	6"
0492-00004	Dust Cap	8"



Part No.	Description	Size
0350-00005	Male Camlock/ Male NPT	1-1/4"
0350-00007	Male Camlock/ Male NPT	2"
0350-00008	Male Camlock/ Male NPT	2-1/2"
0350-00009	Male Camlock/ Male NP	3"
0350-00010	Male Camlock/ Male NPT	4"
0350-00012	Male Camlock/ Male NPT	6"
0350-01248	Male Camlock/ Male NPT - HC	4"



Part No.	Description	Size
0417-10008	Male Camlock/ Female NPT	2-1/2"
0417-10009	Male Camlock/ Female NPT	3"
0417-10010	Male Camlock/ Female NPT	4"
0417-10012	Male Camlock/ Female NPT	6"
0417-10013	Male Camlock/ Female NPT	8"



Part No.	Description	Size
0488-00008	Straight Male w/ Hose Shank	3"
0488-00009	Straight Male w/ Hose Shank	4"
0488-00011	Straight Male w/ Hose Shank	6"
0488-00012	Straight Male w/ Hose Shank	8"



Part No.	Description	Size
0500-00006	Straight Female w/ Hose Shank	2"
0500-00009	Straight Female w/ Hose Shank	4"
0500-00011	Straight Female w/ Hose Shank	6"



Part No.	Description	Size
0489-00008	Dust Plug	3"
0489-00009	Dust Plug	4"
0489-00011	Dust Plug	6"



Part No.	Description	Size
9000-00679	Adaptor	4"AG(F) to 4" Camlock (F)
9000-00678	Adaptor	6"AG(F) to 6" Camlock (F)



Part No.	Description	Size
9000-00680	Adaptor	4"AG(M) to 4" Camlock (M)
9000-00670	Adaptor	6"AG(M) to 6" Camlock (M)

Galvanized Elbows



Galvanized steel, quick-connecting in 45° and 90°. Can be used with steel and aluminum couplers.



Part No.	Diameter	Bend	Weight
3000-02187	4.0"	45°	3.0 lbs.
3000-00911	6.0"	45°	5.0 lbs.
3000-00912	8.0"	45°	7.0 lbs.
3000-02186	4.0"	90°	4.2 lbs.
3000-00909	6.0"	90°	6.9 lbs.
3000-00910	8.0"	90°	9.9 lbs.

Double Walled		
Part No.	Diameter	Bend
3000-02740	6.0"	45°
3000-02728	6.0"	90°
3000-02768	8.0"	90°



Part No.	Description
8510-01468	Elbow w/Handle for Camel

**Please Have Your
Serial Number Available
When Contacting Us
For Part Information
or Part Numbers**

Boom Cannon - Supersucker® Only

BOOM CANNON ASSEMBLY

Part No.	Description	Diameter
9800-00403	Stationary	8"
9800-00259	Rotational	8"

BOOM CANNON ASSEMBLY WITH LINER

Part No.	Description	Diameter
9800-00258	Stationary	8"
9800-00261	Rotational	8"



BOOM CANNON WEAR LINER and LINER EXTENSION

Part No.	Description
2000-02671	Liner Extension
8500-01461	Boom Cannon Wear Liner



BOOM CANNON

Part No.	Description	Diameter
8500-02119	Cannon End Cover	6.0"
8500-01245	Cannon End Cover	8.0"
8500-01246	Top Cover for Cannon w/Liners	8.0" Top Cover



Port Adaptor



Part No.	Description	Size
8500-01954	Rear Port	8"
3100-01059	Rear Port / Ceramic Lined	8"



Part No.	Description
8500-01800	Port Hole Deflector
3100-01170	Port Hole Deflector / Ceramic Lined

Aluminum Reducer



To reduce the diameter of hose or aluminum tubing.

Part No.	Reduction	Weight
3000-00929	Male 8.0" to Female 6.0"	6 lbs.
3000-01294	Male 6.0" to Female 4.0"	4 lbs.
3000-02948	Female 8.0" to Male 6.0"	

Steel Reducer



To reduce the diameter of hose or steel tubing.

Part No.	Reduction	Weight
8500-01171	Male 4.0" to Male 2.5"	2 lbs.
8510-01341	Male 5.0" to Female 4.0"	4 lbs.
3000-01794	Male 6.0" to Female 5.0"	6.20 lbs.
(Aluminum to Steel)		
8500-00455	Male 6.0" to Female 4.0"	6.25 lbs.
8510-00858	Male 8.0" to Female 6.0"	8 lbs.
3000-01120	Male 10.0" to Female 8.0"	12 lbs.

Hose Plugs



Plugs female ends of couplers, adapters or tubes. Made of zinc-plated steel. Can be used with steel or aluminum couplers, tubes or adapters.

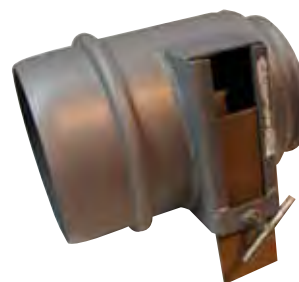
Part No.	Diameter	Weight
3000-00135	2.5"	0.8 lbs.
8500-00286	4.0"	2.0 lbs.
8500-00285	6.0"	3.0 lbs.
8500-00284	8.0"	4.0 lbs.
8510-01010	10.0"	5.0 lbs.

Part No.	Diameter	Description
8510-00405	6.0"	No Handle
8500-00829	8.0"	w/Handle
8500-02330	8.0"	w/Pipe Handle

DOUBLE WALL REDUCERS

Part No.	Reduction
3000-02867	Male 6.0" to Female 4.0"
3000-02739	Male 8.0" to Female 6.0"

Steel Reducer w/ Air Bleed Door



To reduce the diameter of hose or steel tubing. Air bleed door allows additional air into the system to reduce temperature of hot material, pickup material underwater, or assist in moving material in long runs.

Part No.	Reduction	Weight
9000-00177	Male 8.0" to Female 6.0"	12 lbs.

"Y" Connector



For branching two smaller lines to one larger line. Steel construction.

Part No.	Size	Weight
8500-00103	4.0" x 2.5" x 2.5"	3.30 lbs.
3000-02474	4.0" x 4.0" x 4.0"	
8500-00102	6.0" x 4.0" x 4.0"	6.80 lbs.
3000-02475	8.0" x 4.0" x 4.0"	
3000-02732	8.0" x 5.0" x 5.0"	
8500-00101	8.0" x 6.0" x 6.0"	10.5 lbs.



Part No.	Size/Description
3000-02715	6.0" x 6.0" x 6.0"
3000-02431	4.0" x 4.0" x 4.0"
	Straight, no Coupler

Tri-Connector



For branching three smaller lines to one larger line. Steel construction.

Part No.	Size	Weight
8500-00288	6.0" x 2.5" x 2.5" x 2.5"	8 lbs.
8520-00574	6.0" x 3.0" x 3.0" x 3.0"	10 lbs.
8500-00283	8.0" x 4.0" x 4.0" x 4.0"	18 lbs.
3000-02741	6.0" x 6.0" x 6.0" (End Tee)	

Cleanout Ports



To clean out debris in areas not readily accessible. Available in mild steel or stainless steel. Cutting and welding required for installation.

Part No.	Diameter	Weight	Type
3000-01386	8.0"	14 lbs.	Mild Steel
3000-01676	6.0"	8 lbs.	Mild Steel
3000-01540	8.0"	14 lbs.	Stainless Steel
8500-01723	12.0"		LH Dump Tube
8500-01795	12.0"		RH Dump Tube
3000-02419			Handle

Special R

PHOTO NOT AVAILABLE

Part No.	Size	Weight
8500-01914	6" Special R	75 lbs.
8500-02204	8" Special R	90 lbs.

Please Have Your
Serial Number Available
When Contacting Us
For Part Information
or Part Numbers



Special T

PHOTO NOT
AVAILABLE

Part No.	Size	Weight
8500-02159	6" Special T	35 lbs.
8500-02214	8" Special T	45 lbs.

Light Duty Rubber Elbow Assembly

PHOTO NOT
AVAILABLE

Provides more flexibility than rigid steel elbows for bends in steel or hose runs. Male and female ends included.

Part No.	Diameter/Description
9200-00903K	8" Port Hole Hose Assembly, Rear
9300-00124	8" Hose Assembly

Part No.	Diameter	Length	Weight
9300-00109	6"	7' 6"	40 lbs.
9300-00112	8"	7' 6"	58 lbs.
9300-00114	6"	10'	56 lbs.
9300-00118	4"	10'	

Heavy Duty Rubber Elbow Assembly

PHOTO NOT
AVAILABLE

Provides more flexibility than rigid steel elbows for bends in steel or hose runs. Male and female ends included.

Part No.	Diameter	Length	Weight
9300-00110	6"	7' 6"	52 lbs.
9300-00113	8"	7' 6"	70 lbs.
9300-00117	6"	10'	60 lbs.

Hose - Light Duty Work



180 AR abrasion-resistant urethane vacuum suction hose; flexible, lightweight, smooth bore and static dissipating. Specify length in feet when ordering. **Ends and clamps not included.**

Hg. Rating: 27" at 72°F - 16" above 72°F
Temperature Range: -28°F to 158°F -33°C to 70°C

Part No.	Diameter	Weight
3906-01000	2.0"	1.2 lbs.
3906-02000	2.5"	1.7 lbs.
3906-03000	3.0"	2.0 lbs.
3906-09000	3.5"	
3906-04000	4.0"	2.5 lbs.
3906-08000	5.0"	3.75 lbs.
3906-05000	6"	4.5 lbs.
3906-06000	8.0"	6.0 lbs.
3906-07000	10"	7.5 lbs.

High Temperature Hose



High temperature hose, abrasion resistant, lightweight, flexible, smooth bore, wire reinforced and static dissipating. Specify length in feet when ordering. **Ends and clamps not included.**

Hg. Rating: 28" (711.20mm)
Temperature Range: 0°F to 220°F -18°C to 104°C

Part No.	Diameter	Weight
3913-04000	4.0"	3.5 lbs.
3913-05000	6.0"	5.0 lbs.
3913-06000	8.0"	7.0 lbs.

Part No.	Description
3961-60000	High Temp EPDM Hose Temp Range: 300°F Continuous 350°F Short Term

Polyethylene Drain Hose

PHOTO NOT
AVAILABLE

Thermal plastic, non static dissipating, ribbed drain/vacuum hose. Super lightweight. Not recommended for use above 16" Hg vacuum. Sold by the foot. Specify length in feet when

ordering. **Ends and clamps not included.**

Part No.	Diameter	Weight Per Foot
3963-00000	2.0"	
3943-00000	4.0"	.025 lbs.
3927-00000	6.0"	0.50 lbs.

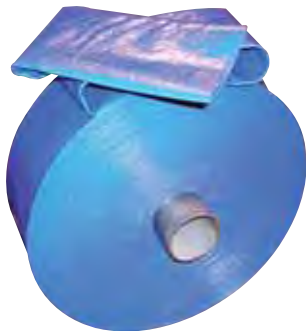
Flexible Galvanized Pipe



In applications where the temperature range exceeds 220°F (104°C). Specify length in feet when ordering. **Ends and clamps not included.**

Part No.	Diameter
3924-06000	4.0"
3924-09000	6.0"
3924-11000	8.0"

Drain Hose



Reinforced hose is non-rigid to lay flat. For drains only, not for vacuum applications. Sold by the foot. Specify length in feet when ordering. **Ends and clamps not included.**

Part No.	Diameter	Weight Per Foot: 0.90lbs. 30.48cm = 10.16kg
3823-00000	2.0"	
3825-00000	3.0"	
3826-00000	4.0"	
3827-00000	6.0"	

Heavy-Duty Port Hose (Supersucker® Only)



Extra heavy, smooth bore hose with wire and fabric reinforcement. 4" (101.6mm) long soft cuffs on both ends. 1/4" (6.35mm) thick pure gum liner for abrasion resistance and static dissipating. For permanent connection to body port or severe wear areas. **Ends and clamps not included.**

Hg. Rating: 28" (711.20mm)
Temperature Range: -28°F to 180°F (-33°C to 82°C)

Part No.	Diameter	Length	Weight	S.S. Model
3500-00029	6.0"	8.0'	50 lbs.	3516, 2016
3500-00030	8.0"	8.0'	70 lbs.	3516, 2016
3500-00234	8.0"	16.0"	150 lbs.	All Others
3500-00508	8.0"	14' 8"	135 lbs.	5117, 6117, 4026, 5027
3500-00514	8.0"	21' 6"	200 lbs.	5117, 6117, 4026, 5027

Heavy-Duty Hose



Smooth bore heavy-duty rubber hose with wire and fabric reinforcement. 4" (101.6mm) long soft cuff on both ends. Designed for maximum flexibility and abrasion service. Hose is also static dissipating. **Ends and clamps not included.**

Hg. Rating: 28" (711.20mm)
Temperature Range: -28°F to 180°F (-33°C to 82°C)

Part No.	Diameter	Length	Weight
3500-00459	2.5"	20'	25 lbs.
3500-00019	2.5"	50'	55 lbs.
3500-00010	4.0"	20'	43 lbs.
3500-00048	6.0"	10'	50 lbs.
3500-00049	8.0"	10'	70 lbs.



Steel & Aluminum Super Tubes



Quick connecting tubes with male & female ends.
Lock ring and gaskets not included.

ALUMINUM W/STEEL ENDS

Part No.	Diameter	Length	Weight
8510-02320	6.0"	10.0'	
8510-02321	6.0"	20.0'	
8510-02326	8.0"	10.0'	
8510-02327	8.0"	20.0'	

NON-COATED STEEL

Part No.	Diameter	Length	Weight
8500-01610	6.0"	8.0'	40 lbs.
8500-01613	6.0"	10.0'	50 lbs.
8500-01824	6.0"	16.0'	80 lbs.
8500-01614	8.0"	8.0'	58 lbs.
8500-01615	8.0"	10.0'	68 lbs.

COATED STEEL

Part No.	Diameter	Length	Weight
8500-00021	6.0"	8.0'	40 lbs.
8500-01087	6.0"	10.0'	50 lbs.
8500-01133	8.0"	6.0'	48 lbs.
8500-00020	8.0"	8.0'	58 lbs.
8500-01086	8.0"	10.0'	68 lbs.
8500-01130	10.0"	10.0'	85 lbs.

ALUMINUM

Part No.	Diameter	Length	Weight
8510-01017	4.0"	4.0'	6 lbs.
8510-00875	4.0"	8.0'	12 lbs.
8510-01846	4.0"	10.0'	12.6 lbs.
8510-01847	4.0"	20.0'	12.6 lbs.
8510-01019	5.0"	4.0'	8 lbs.
8510-01020	5.0"	8.0'	18 lbs.
8510-00285	6.0"	2.0'	
8510-01147	6.0"	3.0'	8 lbs.
8510-01148	6.0"	5.0'	10 lbs.
8510-01371	6.0"	7.0'	15 lbs.
8510-00287	6.0"	8.0'	17 lbs.
8510-00938	6.0"	10.0'	20 lbs.
8510-01781	6.0"	16.0'	32 lbs.
8510-01326	6.0"	20.0'	40 lbs.
8510-00288	8.0"	2.0'	
8510-01373	8.0"	3.0'	11 lbs.
8510-01374	8.0"	5.0'	15 lbs.
8510-01375	8.0"	7.0'	23 lbs.
8510-00290	8.0"	8.0'	25 lbs.
8510-01376	8.0"	10.0'	30 lbs.
8510-02128	8.0"	20.0'	60 lbs.

ALUMINUM W/LONG MALE ENDS

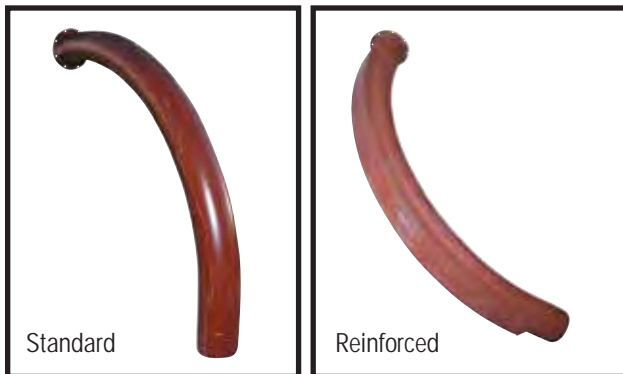
Part No.	Diameter	Length	Weight
8510-02417	6.0"	10.0'	20 lbs.
8510-02432	6.0"	20.0'	
8510-02433	8.0"	10.0'	
8510-02434	8.0"	20.0'	

Dig Tubes



Part No.	Description
9010-00799	Digging Tube 4" (Hydro-X)
9010-00798	Digging Tube 6" (Hydro-X)
9010-00805	Digging Tube 8" (Hydro-X)

Boom Elbow (Camel® Only)



STANDARD

Part No.	Description	Weight
9214-00072	Boom Elbow 6" Standard	55 lbs.
9214-00073	Boom Elbow 6" Short	
9214-00070	Boom Elbow 8" Standard	83 lbs.
9214-00071	Boom Elbow 8" Short	68 lbs.

REINFORCED

Part No.	Description
9214-00077	Boom Elbow 6" Long
9214-00076	Boom Elbow 6" Short
9214-00075	Boom Elbow 8" Long
9214-00074	Boom Elbow 8" Short

Fluidizing Tube



Made of aluminum with Quick connect couplings on both ends. Assists in picking up material under water or reducing

temperature of hot material. **Clamps not included.**

Part No.	Diameter	Weight
4510-00124	4.0"	5 lbs.
4510-00125	5.0"	6 lbs.
4510-00049	6.0"	8 lbs.
4510-00051	8.0"	11 lbs.

Circular Operators Handle



Clamps around metal or aluminum tubing and allows for easier handling.

Part No.	Diameter	Weight
9400-00131	4.0"	7.6 lbs.
9400-00132	6.0"	6.0 lbs.
9400-00133	8.0"	8.0 lbs.

Floor Nozzle

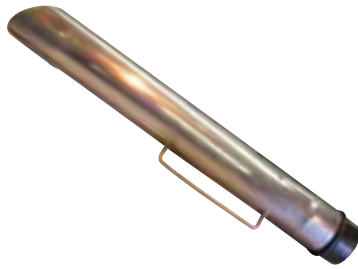


Made of aluminum with nylon wheels. Makes clean-up of flat areas quick and easy. Cleans a path 20.0" (508.0 mm) wide. Measurement for diameter of vacuum hose. **Hose not included.**

Part No.	Diameter	Weight
9420-00022	2.5"	17 lbs.
9020-00190	3.0"	19 lbs.
9020-00166	4.0"	24 lbs.
9020-00167	6.0"	34 lbs.



Crevice Tool



Lightweight aluminum construction with sturdy handle for hard-to-reach areas. With straight or angled tip.

Part No.	Diameter	Weight	Tip Style
8520-00335	2.5"	3.0 lbs.	Angled
8520-00393	3.0"	4.0 lbs.	Angled
8520-00305	4.0"	4.6 lbs.	Angled
8520-00577	6.0"	8.0 lbs.	Straight
3000-02729	6.0" Bulk Nozzle (Same as Crevice Tool w/Round End)		

Crown Nozzle



Constructed of steel with serrated bottom that allows for air entry and break-up of material. Use with steel or aluminum tubes.

Part No.	Diameter	Weight
8500-02690	4.0"	5.8 lbs.
8500-02691	5.0"	6.2 lbs.
8500-02692	6.0"	9.2 lbs.
8500-02683	8.0"	13.3 lbs.

Crown Tube

PHOTO NOT AVAILABLE

Part No.	Description
8500-02739	8" x 6' Crown Tube

Wet Ring



Attaches to water source. Injects water into vacuum line when picking up dry, powdery material. Reduces dust and carryover, reduces temperature of hot material. Steel construction. Includes valve and quick disconnect.

Water valve pressure rating: 2000psi (13792Kpa/138Bars)

Part No.	Diameter	Weight
9010-00116	6.0"	10 lbs.
9010-00109	8.0"	15 lbs.

Part No.	Description
6000-01029-0003	Ball Valve
6000-00685	Quick Disconnect

Vacuum Breaker



Breaks vacuum between truck and end of hose. Specify hose diameter when ordering.

- Includes pull chain

NEW VAC BREAKER Part No.	Diameter
3000-02758	4.0"
3000-02615	6.0"
3000-02757	8.0"

Please Have Your
Serial Number Available
When Contacting Us
For Part Information
or Part Numbers

Supersucker® Filter Bags

Round Debris Body Models from 1984 to 1992.

Supersucker® Models: 4517, 5017, 6017

The following filter bags will fit some competitive units including Vactor® and Guzzler®. Consult Super Products for applications.

STANDARD DRY - 1st STAGE

Temperature Range: 150°F (65°C) Continuous
180°F (82°C) Short Term

16oz. polypropylene. Exclusive “super seal” top and bottom wear cuff. Efficiency is 99.9% to 1 micron. Use with retainer Part No. 3000-01023 or 3000-01022.

Part No.	Quantity	Weight
3000-01008	60 per set	1.0 lbs.

STANDARD WET - 2nd STAGE

Temperature Range: 150°F (65°C) Continuous
180°F (82°C) Short Term

9oz. polyethylene. Exclusive “super seal” top and bottom wear cuff. Use with retainer Part No. 3000-01023 or 3000-01022.

Part No.	Quantity	Weight
3000-01009	13 per set	1.0 lbs.

GORE-TEX® E-Z CLEAN - 1st Stage

Temperature Range: 275°F (135°C) Continuous
300°F (148°C) Short Term

12oz. polyester felt backing with a GORE-TEX® outer lining. Exclusive “super seal” top and bottom wear cuff. Good with clinging type dust and materials that plug up standard bags. Use with retainer Part No. 3000-01023 or 3000-01022.

Part No.	Quantity	Weight
3000-01059	60 per set	1.0 lbs.

NOMEX® DRY - 1st STAGE

Temperature Range: 400°F (204°C) Continuous
425°F (218°C) Short Term

14oz. NOMEX®. Exclusive “super seal” top and bottom wear cuff. Good in high temperature operations. Use with retainer Part No. 3000-01023 or 3000-01022.

Part No.	Quantity	Weight
3000-01075	60 per set	1.0 lbs.

NOMEX® WET - 2nd STAGE

Temperature Range: 400°F (204°C) Continuous
425°F (218°C) Short Term

8.5oz. NOMEX®. Exclusive “super seal” top and bottom wear cuff. Good in high temperature operations. Use with retainer Part No. 3000-01023 or 3000-01022.

Part No.	Quantity	Weight
3000-01076	13 per set	1.0 lbs.

ACRYLIC-COATED - 1st Stage

Temperature Range: 250°F (121°C) Continuous
285°F (140°C) Short Term

16oz. polyester. Exclusive “super seal” top and bottom wear cuff. Acrylic-coated for easier cleaning. Use with retainer Part No. 3000-01023 or 3000-01022.

Part No.	Quantity	Weight
3000-02109	60 per set	1.0 lbs.

Supersucker® Retainers

Round Debris Body Models - Supersucker® Models: 4517, 5017, 6017 - For use in both wet and dry stages of the baghouse. Made of zinc-plated steel and available in 304 stainless steel. Use with “super seal” top bags only. Packaged individually.

Part No.	Quantity	Weight	Stage
3000-02200	Zinc-Plated	4.0 lbs.	1st & 2nd
3000-01022	Stainless Steel	4.0 lbs.	1st & 2nd



Filter Bags

Square Debris Body Models - Supersucker® Models: 2016, 3516

STANDARD DRY - 1st STAGE

Temperature Range: 150°F (65°C) Continuous
180°F (82°C) Short Term

16oz. polypropylene. Original design of bag within a bag. Original top design. Use with retainer Part No. 3000-00426 or 3000-00428.

Part No.	Quantity	Weight
3000-00003	40 per set	1.0 lbs.

STANDARD WET - 2nd STAGE

Temperature Range: 150°F (65°C) Continuous
180°F (82°C) Short Term

9oz. polyethylene. Original design of bag within a bag. Original top design. Use with retainer Part No. 3000-00427 or 3000-00429.

Part No.	Quantity	Weight
3000-00004	10 per set	1.0 lbs.

REPLACEMENT DRY - 1st Stage

Temperature Range: 150°F (65°C) Continuous
180°F (82°C) Short Term

16oz. polypropylene. Inexpensive replacement for original design Part No. 3000-00003. Single bag made with bottom wear cuff. Original top design. Use with retainer Part No. 3000-00426 or 3000-00428.

Part No.	Quantity	Weight
3000-01400	40 per set	1.0 lbs.

REPLACEMENT WET - 2nd Stage

Temperature Range: 90°F (32°C) Continuous
100°F (37°C) Short Term

9oz. polyethylene. Inexpensive replacement for original design Part No. 3000-00004. Single bag made with bottom wear cuff. Original top design. Use with retainer Part No. 3000-00427 or 3000-00429.

Part No.	Quantity	Weight
3000-01042	10 per set	1.0 lbs.

NOMEX® DRY - 1st STAGE

Temperature Range: 400°F (204°C) Continuous
425°F (218°C) Short Term

14oz. NOMEX®. Original bag within a bag construction. Original top design. For high temperature operations. Use with retainer Part No. 3000-00426.

Part No.	Quantity	Weight
3000-00153	40 per set	1.0 lbs.

NOMEX® WET - 2nd STAGE

Temperature Range: 400°F (204°C) Continuous
425°F (218°C) Short Term

14oz. NOMEX®. Original bag within a bag construction. Original top design. For high temperature operations. Use with retainer Part No. 3000-00427.

Part No.	Quantity	Weight
3000-00171	10 per set	1.0 lbs.

REPLACEMENT NOMEX® DRY - 1st STAGE

Temperature Range: 400°F (204°C) Continuous
425°F (218°C) Short Term

14oz. NOMEX®. Inexpensive replacement for original design Part No. 3000-00153. Single bag made with bottom wear cuff. Original top design. Use with retainer Part No. 3000-00426.

Part No.	Quantity	Weight
3000-01401	40 per set	1.0 lbs.

REPLACEMENT NOMEX® WET - 2nd Stage

Temperature Range: 400°F (204°C) Continuous
425°F (218°C) Short Term

6.4oz. NOMEX®. Inexpensive replacement for original design Part No. 3000-00171. Single bag made with bottom wear cuff. Original top design. Use with retainer Part No. 3000-00427.

Part No.	Quantity	Weight
3000-01403	10 per set	1.0 lbs.

NOMEX® DRY - 1st Stage

Temperature Range: 400°F (204°C) Continuous
425°F (218°C) Short Term

14oz. NOMEX®. Newest design with exclusive “super seal” top and bottom wear cuff. Use with retainer Part No. 3000-01404.

Part No.	Quantity	Weight
3000-01397	40 per set	1.0 lbs.

NOMEX® WET - 2nd STAGE

Temperature Range: 400°F (204°C) Continuous
425°F (218°C) Short Term

6.4oz. NOMEX®. Newest design with exclusive “super seal” top and bottom wear cuff. Use with retainer Part No. 3000-01404.

Part No.	Quantity	Weight
3000-01399	10 per set	1.0 lbs.

Supersucker® Filter Bags & Retainers



Single Filtration Units.

Filter Bags: From 1992 to present models.

Supersucker® Models:
4026, 4027, 5027, 5117,
6117

ACRYLIC-COATED FILTER BAG - Standard is made of 16oz. polyester, including exclusive “super seal” top and bottom wear cuff. Acrylic-coated for easier cleaning. Temperature range: 250°F (121°C) continuous; 285°F (140°C) short terms.

Part No.	Quantity	Weight
3000-02109	60 per set	1.0 lbs.

NOMEX® FILTER BAG - OPTIONAL - Made of 14oz. Nomex®, including exclusive “super seal” top and bottom wear cuff. Good in high temperature options. Temperature range: 400°F (204°C) continuous; 425°F (218°C) short term.

Part No.	Quantity	Weight
3000-01075	60 per set	1.0 lbs.

RETAINERS (CAGES) - STANDARD - Made of steel and zinc-plated (standard).

Part No.	Weight
3000-02200	4.0 lbs.

ABOVE RETAINER IS ALSO AVAILABLE IN 304 STAINLESS STEEL

Part No.	Weight
3000-01022	4.0 lbs.

Supersucker® Filter Bags

Square Debris Body Models from 1973 to 1984. Supersucker Models: 2016, 3516

Temperature Range: 150°F (65°C) Continuous
180°F (82°C) Short Term

16oz. polypropylene. Newest design with exclusive “super seal” top and bottom wear cuff. Use retainer Part No. 3000-01404.

Part No.	Quantity	Weight
3000-01396	40 per set	1.0 lbs.

Temperature Range: 150°F (65°C) Continuous
180°F (82°C) Short Term

9oz. polyethylene. Newest design with exclusive “super seal” top and bottom wear cuff. Use retainer Part No. 3000-01404.

Part No.	Quantity	Weight
3000-01398	10 per set	1.0 lbs.

Supersucker® Retainers

Square Debris Body Models from 1973 to 1984. Supersucker® Models: 2016, 3516

Made of zinc-plated steel and available in 304 stainless steel. “Original” retainers to be used with original top bags only. “Super seal” retainers to be used with “super seal” or snaplock top bags only. Packaged individually.

ORIGINAL

Part No.	Type	Weight	Stage
3000-00426	Zinc-Plated	3.0 lbs.	1st
3000-00427	Zinc-Plated	3.0 lbs.	2nd
3000-00428	Stainless Steel	3.0 lbs.	1st
3000-00429	Stainless Steel	3.0 lbs.	2nd

SUPER SEAL

Part No.	Type	Weight	Stage
3000-01404	Zinc-Plated	3.0 lbs.	1st & 2nd
3000-01405	Stainless Steel	3.0 lbs.	1st & 2nd



Guzzler® Filter Bags

The following filter bags will fit a standard Guzzler® vacuum unit. For XCR models, use standard Supersucker® bags Part No. 3000-01008.

Temperature Range: 150°F (65°C) Continuous
180°F (82°C) Short Term

16oz. polyethylene with the “super seal” top.

Part No.	Quantity	Weight
3000-01854	60 per set	1.0 lbs.

Temperature Range: 250°F (121°C) Continuous
285°F (140°C) Short Term

16oz. polyester with an acrylic coating and “super seal” top.

Part No.	Quantity	Weight
3000-02113	60 per set	1.0 lbs.

Additional bags

Part No.	Description
3000-02689	Filter Cartridge for Guzzler Ace®

Steel Tubes for Permanent Vacuum Installation

20' (6.09m) maximum length section.
Measurements are outside diameter. Specify length in feet when ordering. Painted or unpainted. 11 GA (.120") 3.04mm

PAINTED

Part No.	Diameter
1394-00000	3.0"
1393-00000	4.5"
1392-00000	6.0"

UNPAINTED

Part No.	Diameter
1264-00000	3.0"
1267-00000	4.5"
1333-00000	6.0"
1734-00000	8.0"

Guzzler® Retainers

For use on Guzzler® models only. Made of standard zinc-plated steel and are available in 304 stainless steel. Use with “super seal” top bags only. Packaged individually.

Part No.	Type	Weight
3000-01876-0001	Zinc-Plated	13 lbs.
3000-01876-0003	Stainless Steel	13 lbs.

Vactor® Filter Bags

The following filter bags will fit a standard Vactor® vacuum unit.

Temperature Range: 150°F (65°C) Continuous
180°F (82°C) Short Term

16oz. polyester with “super seal” top.

Part No.	Quantity	Weight
3000-02114	70 per set	1.0 lbs.

Temperature Range: 250°F (121°C) Continuous
285°F (140°C) Short Term

16oz. polyester with an acrylic coating and “super seal” top.

Part No.	Quantity	Weight
3000-02115	70 per set	1.0 lbs.

Steel Connecting “Y” Pipes

PHOTO NOT
AVAILABLE

11 GA (.120") 3.04mm

Part No.	Diameter
8520-00105	3.0" x 3.0"
8520-00104	4.5" x 3.0"
8520-00103	4.5" x 4.5"
8520-00188	6.0" x 4.5"
8520-00187	6.0" x 6.0"
8520-00598	8.0" x 6.0"
8520-00279	4.5" x 3.0" x 3.0"
8520-00271	4.5" x 4.5" x 4.5"
8520-00368	6.0" x 4.5" x 4.5"

Steel Elbows



11 GA (.120") 3.04mm

Part No.	Diameter	Bend
3000-02025	3.0"	45°
3000-02026	3.0"	75°
3000-02027	3.0"	90°
3000-02028	3.0"	105°
3000-02029	4.5"	45°
3000-02030	4.5"	75°
3000-02031	4.5"	90°
3000-02032	4.5"	105°
3000-02020	6.0"	45°
3000-02015	6.0"	75°
3000-02006	6.0"	90°
3000-02024	6.0"	105°

Suction Outlet

Used in permanent piping as access point for attaching vacuum tools. Seals line when not in use.

Part No.	Diameter	Weight	Compatible Work Hose Sizes
9520-00015	3.0"	4.0 lbs.	2.0" 2.5" 3.0"
9020-00025	4.5"	5.0 lbs.	2.0" 2.5" 3.0" 4.0"
9020-00174	6.0"	6.0 lbs.	2.0" 2.5" 3.0" 4.0"

**Please Have Your
Serial Number Available
When Contacting Us
For Part Information
or Part Numbers**

Permanent Suction Outlet Cone Fitting



Clamps to work hose and plugs into permanent suction outlet. **Hose measurements for inside diameter.**

FOR 3.0" (76.2MM) SUCTION OUTLET

Part No.	Hose	Weight
9020-00011	2.0"	1.5 lbs.
9020-00012	2.5"	2.0 lbs.
9020-00013	3.0"	2.5 lbs.
9020-00176	6.0"	

FOR 4.5" (114.3MM) SUCTION OUTLET

Part No.	Hose	Weight
9020-00084	2.0"	3.0 lbs.
9020-00044	2.5"	3.5 lbs.
9020-00045	3.0"	4.0 lbs.
9020-00038	4.0"	5.0 lbs.

Compression Couplings



For connecting permanent piping with a vacuum tight seal. **Pipe measurements are outside diameter.**

Part No.	Pipe	Weight
3000-01090	3.0"	3 lbs.
3000-00654	4.5"	4 lbs.
3000-00542	6.0"	6 lbs.
3000-01626	4.5"	7 lbs.
3000-01625	6.0"	9 lbs.
3000-01624	8.0"	11 lbs.



Contact Your Authorized Super Products Dealer/Distributor

